



KAR TEK

OFF ROAD

WHERE OFFROAD IS ON!

FABRICATION CATALOG

Volume 4





Starting out as a VW repair shop in 1984, Kartek Off-Road has grown by leaps and bounds to become a leader in the off-road industry by providing premier products and quality customer service. From our humble beginnings, we now ship to customers Nationwide and Worldwide, while providing a high standard of sales service to local California offroaders.

Kartek Off-Road is the largest off-road specific retail store in California with a combined warehouse/showroom in one 23,000 sq. ft. building. 9,000 sq. ft. is dedicated as a meticulous showroom featuring the latest in off-road racing technology and beautifully maintained customer cars.

Kartek started out carrying VW parts and has expanded over the years to also include products for all types of sand rails, pre-runners, trucks, Jeeps, off-road race cars, UTV's and Trophy Karts. This variety, combined with our 'always available' philosophy of maintaining an inventory with depth has allowed our customers the convenience of buying the right part and installing it immediately on their project.

Order by Phone
951-737-7223
951-737-2999

Order by Email
offroad@kartek.com

Order by Fax
951-737-1877

Kartek Off-Road
2871 Ragle Way
Corona, CA. 92879-1877

Store Hours PST
MON-FRI: 9am-6pm
SAT: 9am-3pm
SUN: CLOSED

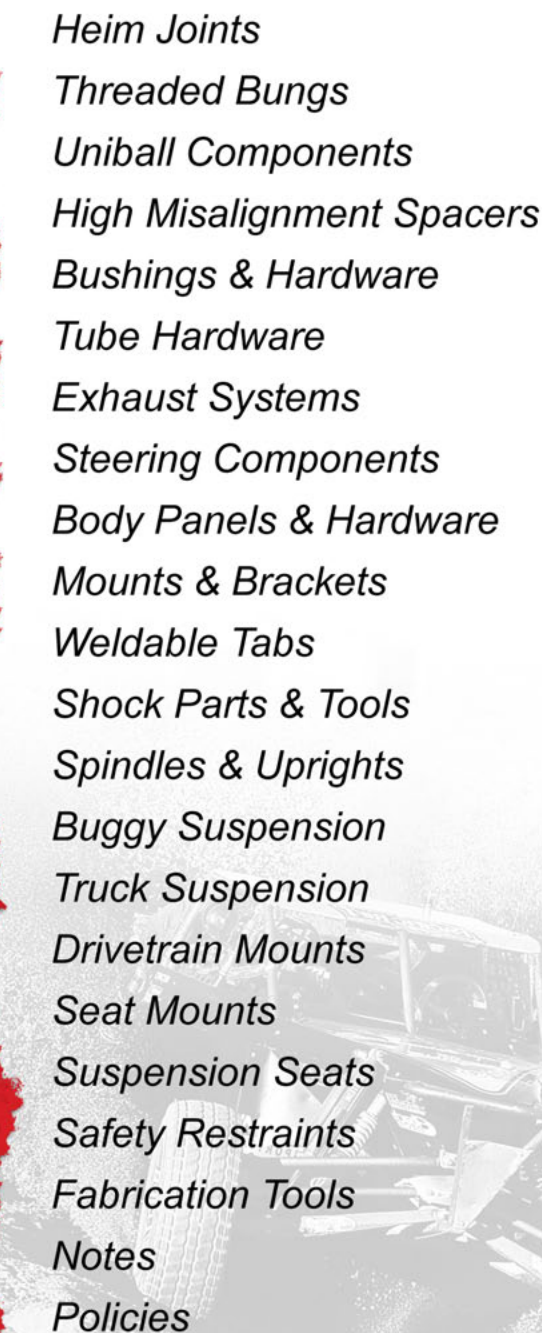
www.kartek.com



Table of Contents

Page

1	<i>Heim Joints</i>
3	<i>Threaded Bungs</i>
4	<i>Uniball Components</i>
5	<i>High Misalignment Spacers</i>
6	<i>Bushings & Hardware</i>
9	<i>Tube Hardware</i>
11	<i>Exhaust Systems</i>
13	<i>Steering Components</i>
18	<i>Body Panels & Hardware</i>
21	<i>Mounts & Brackets</i>
25	<i>Weldable Tabs</i>
27	<i>Shock Parts & Tools</i>
29	<i>Spindles & Uprights</i>
33	<i>Buggy Suspension</i>
40	<i>Truck Suspension</i>
42	<i>Drivetrain Mounts</i>
44	<i>Seat Mounts</i>
45	<i>Suspension Seats</i>
47	<i>Safety Restraints</i>
48	<i>Fabrication Tools</i>
50	<i>Notes</i>
51	<i>Policies</i>



Heim Joints

Every heim joint and unibal is made to precision tolerances to ensure maximum lifespan and extra strength. Several different series are available for virtually every type of application. When ordering, please request left or right hand thread.

JMX Series

A 3-piece design made from a high strength steel alloy with a teflon lining. Most common rod end for custom suspension or steering setups.

- 3 Piece, Chromoly Steel Body
- Hard Chrome Plated
- 52100 Steel Ball
- Teflon Lined



Part Number	Description
FKB-JMX4T	1/4" ball - 1/4"-28 shank
FKB-JMX6T	3/8" ball - 3/8"-24 shank
FKB-JMX7T	7/16" ball - 7/16"-20 shank
FKB-JMX8T	1/2" ball - 1/2"-20 shank
FKB-JMX10T	5/8" ball - 5/8"-18 shank

Part Number	Description
FKB-JMX12T	3/4" ball - 3/4"-16 shank
FKB-JMX14T	7/8" ball - 7/8"-14 shank
FKB-JMX161T	1" ball - 1"-14 shank
FKB-JMX16T	1" ball - 1-1/4"-12 shank

RSMX Series

A 3-piece made from a high strength steel alloy with a heavy duty shank with a teflon lining. This series features a thicker shaft than the JMX series for heavy applications and hard off-road abuse.

- 3 Piece, Chromoly Steel Body
- Oversized Shank
- Hard Chrome Plated
- 52100 Steel Ball
- Teflon Lined



Part Number	Description
FKB-RSMX6T	3/8" ball - 7/16"-20 shank
FKB-RSMX7T	7/16" ball - 1/2" -20 shank
FKB-RSMX8T	1/2" ball - 5/8"-18 shank
FKB-RSMX10-8T	1/2" ball - 3/4"-16 shank

Part Number	Description
FKB-RSMX10T	5/8" ball - 3/4"-16 shank
FKB-RSMX12T	3/4" ball - 7/8"-14 shank
FKB-RSMX14T	7/8" ball - 1"-14 shank

HRSMX Series

A misalignment series with a 3-piece design which is made from high strength steel alloy and has a teflon lining. The ball has been machined with misalignment shoulders.

- 3 Piece, Chromoly Steel Body
- Built in Misalignment
- Hard Chrome Plated
- 52100 Steel Ball
- Teflon Lined



Part Number	Description
FKB-HRSMX6T	3/8" ball - 7/16"-20 shank
FKB-HRSMX7T	7/16" ball - 1/2"-20 shank
FKB-HRSMX8T	1/2" ball - 5/8"-18 shank

Part Number	Description
FKB-HRSMX10T	5/8" ball - 3/4"-16 shank
FKB-HRSMX12T	3/4" ball - 7/8"-14 shank

KMX Series

A 3-piece rod end made from an alloy steel with an injected nylon race.

- 4130 Chromoly Steel Body
- Hard Chrome Plated
- 52100 Steel Ball
- Nylon Lined



Part Number	Description
FKB-KMX6	3/8" ball - 3/8"-24 shank
FKB-KMX8	1/2" ball - 1/2" -20 shank
FKB-KMX10	1/2" ball - 5/8" -18 shank
FKB-KMX12	3/4" ball - 3/4" -16 shank

CM Series

A 2-piece design that is chrome plated for light duty applications such as shifter linkages, steering shaft supports and throttle linkages. Available with left handed threads, or also with a stud.



- 2 Piece, Low Carbon Steel Body
- Hard Chrome Plated
- 52100 Steel Ball
- For light duty applications

Part Number	Description
FKB-CM4	1/4" ball - 1/4"-28 shank
FKB-CM6	3/8" ball - 3/8"-24 shank
FKB-CM7	7/16" ball - 7/16"-20 shank

Part Number	Description
FKB-CM8	1/2" ball - 1/2"-20 shank
FKB-CM10	5/8" ball - 5/8"-18 shank
FKB-CM12	3/4" ball - 3/4"-16 shank

CF Series

A 2-piece female rod end that is chrome plated for light duty applications such as shifter linkages, steering shaft supports and throttle linkages. Available with left handed threads or also with a stud.



- 2 Piece, Low Carbon Steel Body
- Hard Chrome Plated
- 52100 Steel Ball
- For light duty applications

Part Number	Description
FKB-CF4	1/4" ball - 1/4"-28 shank
FKB-CF6	3/8" ball - 3/8"-24 shank
FKB-CF7	7/16" ball - 7/16"-20 shank

Part Number	Description
FKB-CF8	1/2" ball - 1/2"-20 shank
FKB-CF10	5/8" ball - 5/8"-18 shank
FKB-CF12	3/4" ball - 3/4"-16 shank

Jam Nuts

Jam nuts are required to hold a heim joint in place and prevent damage to threaded bungs. Zinc plated & aluminum jam nuts are available. When ordering, please request left or right hand thread.



Zinc Plated

Part Number	Description
FKB-SJN03	10mm-32 Jam Nut
FKB-SJN04	1/4"-28 Jam Nut
FKB-SJN05	5/16"-24 Jam Nut
FKB-SJN06	3/8"-24 Jam Nut
FKB-SJN07	7/16"-20 Jam Nut
FKB-SJN08	1/2"-20 Jam Nut

Part Number	Description
FKB-SJN10	5/8"-18 Jam Nut
FKB-SJN12	3/4"-16 Jam Nut
FKB-SJN14	7/8"-14 Jam Nut
FKB-SJN161	1"-14 Jam Nut
FKB-SJN16	1-1/4"-12 Jam Nut

Dust Boots

These trick rubber boots keep dust, water and other contaminants out of those expensive heims joints giving them a longer lifespan.

Part Number	Description
FKB-SMBOOT	3/8" to 7/16" Heim
FKB-MEDBOOT	1/2" to 5/8" Heim
FKB-LRGBOOT	3/4" to 7/8" Heim
FKB-XLRGBOOT	1" to 1-1/4" Heim



Threaded Bungs

Standard Bungs

Standard threaded bungs are machined from forged 4130 chromoly steel and are available in both left and right hand threads. These require a jam nut. When ordering, please request left or right hand thread.

Part Number	Description
PRM-750TBM	3/4" right hand for 1.25" x 0.125" tubing
PRM-875TBM	7/8" right hand for 1.50" x 0.120" tubing
PRM-875TBMHD	7/8" right hand for 1.75" x 0.120" tubing
PRM-100TBMHD	1" right hand for 1.75" x 0.120" tubing
PRM-1250TBM	1-1/4" right hand for 1.75" x 0.120" tubing
PRM-1250TBMHD	1-1/4" right hand for 2" x 0.120" tubing



Step Race Bungs

Step race bungs allows for a clean, uniform appearance. These bungs are machined from forged 4130 chromoly steel and are available in both left and right hand threads. These require a jam nut. When ordering, please request left or right hand thread.

Part Number	Description
PRM-375TBRR095	3/8" right hand for 1.00" x 0.095" tubing
PRM-500TBRR095	1/2" right hand for 1.00" x 0.095" tubing
PRM-625TBRR095	5/8" right hand for 1.00" x 0.095" tubing
PRM-625TBRR100	5/8" right hand for 1.25" x 0.120" tubing
PRM-625TBRR120	5/8" right hand for 1.00 x 0.120" tubing
PRM-750TBRR	3/4" right hand for 1.25" x 0.120" tubing
PRM-750BRR1250	3/4" right hand for 1.50" x 0.120" tubing
PRM-875TBRR	7/8" right hand for 1.50" x 0.120" tubing
PRM-100TBRR	1" right hand for 1.50" 0.120" tubing
PRM-1250TBRR	1-1/4" right hand for 1.75" x 0.120" tubing



Round Clamp Bungs

Round pinch bungs uses a clamping design instead of a jam nut to lock the threads on the heim which allows for a tighter fit. The round design allows it to be matched to the tube's size for a uniform appearance. When ordering, please request left or right hand thread.

Part Number	Description
PRM-875BTBT2	7/8" double bolt stepped for 1.50" x 0.120"
PRM-100BTBT2	1" double bolt stepped for 1.75" x 0.120"
PRM-1250BTBT	1-1/4" single bolt stepped for 1.75" x 0.120"
PRM-1250BTBT2	1-1/4" double bolt stepped for 1.75" x 0.120"



Square Clamp Bungs

The square pinch bungs has the same benefits as the round pinch bungs but allow for a continuous angular look when used with boxed and plated control arms. When ordering, please request left or right hand thread.

Part Number	Description
PRM-750BTBTS	3/4" single bolt stepped, 1.25" dia.
PRM-875BTBTS	7/8" single bolt stepped, 1.25" dia.
PRM-875BTBT2S	7/8" double bolt stepped, 1.25" dia.
PRM-875BTBTSS	7/8" single bolt non-stepped, 1.5" dia.
PRM-100BTBTS	1" single bolt stepped, 1.25" dia.
PRM-100BTBT2S	1" double bolt stepped, 1.25" dia.
PRM-100BTBTSS	1" single bolt non-stepped, 1.5" dia.
PRM-1250BTBT2S	1-1/4" double bolt stepped, 1.50" dia.
PRM-1250BTBT2SS	1-1/4" double bolt non-stepped, 1.75" dia.
PRM-1250BTBTSS	1-1/4" single bolt non-stepped, 1.75" dia.



Uniball Components

Uniballs

Almost every type of off-road vehicle is now using some type of uniball. A uniball, or spherical bearing, serves as a pivot which can work in very tough environments. The most popular use for them is for suspension pivots. Generally, customers will choose a uniball over a ball joint for strength & dependability.



FK COM Series

Part Number	O.D. Size	Bolt Size	Height	Materials
FKB-COM8T	1.000"	.500"	.500"	Steel Body, 52100 Ball
FKB-COM10T	1.187"	.625"	.625"	Steel Body, 52100 Ball
FKB-COM12T	1.440"	.750"	.750"	Steel Body, 52100 Ball
FKB-COMH24T	2.750"	1.500"	1.375"	Steel Body, 52100 Ball, Teflon Lined

FK FKSSX Series

Part Number	O.D. Size	Bolt Size	Height	Materials
FKB-FKSSX8T	1.000"	.500"	.500"	Stainless HT Body, Stainless HT Ball, Teflon Lined
FKB-FKSSX10T	1.187"	.625"	.625"	Stainless HT Body, Stainless HT Ball, Teflon Lined
FKB-FKSSX12T	1.440"	.750"	.750"	Stainless HT Body, Stainless HT Ball, Teflon Lined

FK WSSX Series Wide Series

Part Number	O.D. Size	Bolt Size	Height	Materials
FKB-WSSX8T	1.000"	.500"	.625"	Stainless HT Body, Stainless HT Ball, Teflon Lined
FKB-WSSX10T	1.187"	.625"	.750"	Stainless HT Body, Stainless HT Ball, Teflon Lined
FKB-WSSX12T	1.375"	.750"	.875"	Stainless HT Body, Stainless HT Ball, Teflon Lined
FKB-WSSX14T	1.625"	.875"	.875"	Stainless HT Body, Stainless HT Ball, Teflon Lined
FKB-WSSX16T	2.125"	1.000"	1.375"	Stainless HT Body, Stainless HT Ball, Teflon Lined

FK HIN Series

Part Number	O.D. Size	Bolt Size	Height	Materials
FKB-HIN16TA	2.125"	1.000"	1.375"	HT Steel Body, 52100 Steel Ball, Teflon Lined

NHBB AK Series

Part Number	O.D. Size	Bolt Size	Height	Materials
PRM-AKW24V4010	2.917"	1.500"	1.960"	Stainless HT Body, Stainless HT Ball, Teflon Lined

Uniball Cups

These uniball cups are made from chromoly to allow for a perfect weld for use on today's chassis' and suspension components. These cups are designed for use with FK, NHBB, and Aurora uniballs.

Part Number	Uniball Size	O.D. Size	Height
PRM-9041	0.750"	1.625"	1.250"
PRM-9041T	0.750"	1.625"	1.500"
PRM-9042	0.875"	2.000"	1.250"
PRM-9044	1.000"	2.500"	1.500"
PRM-9044HD	1.000"	2.625"	1.500"
PRM-9044HDT	1.000"	2.625"	1.750"
PRM-9044X.30	1.000"	2.625"	2.000"
PRM-9044HDX225	1.000"	2.625"	2.250"
PRM-9044HDX250	1.000"	2.625"	2.500"
PRM-9046	1.500"	3.240"	1.750"
PRM-9048TT	1.500"	3.490"	2.000"



Snap Rings

Snap rings are made from spring material and hold the uniball when placed in the snap ring groove of a uniball cup.

Part Number	Description
PRM-9041SR	For 3/4" Uniball Cup
PRM-9042SR	For 7/8" Uniball Cup
PRM-9044SR	For 1" Uniball Cup
PRM-9046SR	For 1.5" Uniball Cup
PRM-9048SR	For 1.5" 9048TT Uniball Cup



High Misalignment Spacers

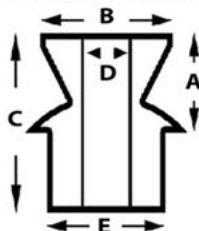


Standard Spacers



Hi-Mis Spacers

High Misalignment spacers are designed for suspension joints, steering ends and anything else that uses the pivot of a spherical bearing. They have two functions: A) reduce the hole size to accommodate a smaller bolt. B) to increase the angle of a spherical bearing. How much angle is determined by the bolt size and the amount of material removed. When more material is removed, the strength of the spacer is decreased. The same happens when using a larger bolt. To compensate for this we only use heat treated 17-4 stainless steel for our spacers. This also prevents corrosion when used in everyday applications.



Hi-Misalignment Spacers

Part Number	A (Flange)	B (Head)	C (Length)	D (Bolt Size)	E (Uniball)	Max Angle
PRM-HMA1238	0.280"	0.690"	0.590"	3/8"	1/2"	30°
PRM-HMA5812SS	0.250"	0.750"	0.627"	1/2"	5/8"	33°
PRM-HMA5812S	0.375"	0.750"	0.750"	1/2"	5/8"	32°
PRM-HMA5812T	0.550"	0.800"	0.920"	1/2"	3/4"	32°
PRM-HMA34716	0.315"	0.860"	0.752"	7/16"	3/4"	35°
PRM-HMA3412	0.475"	1.000"	0.910"	1/2"	3/4"	33°
PRM-HMA3458	0.475"	1.000"	0.910"	5/8"	3/4"	33°
PRM-HMA7812	0.625"	1.030"	1.060"	1/2"	7/8"	33°
PRM-HMA7812S	0.318"	1.000"	0.750"	1/2"	7/8"	
PRM-HMA7812M	0.500"	1.030"	0.925"	1/2"	7/8"	
PRM-HMA7858	0.625"	1.030"	1.060"	5/8"	7/8"	30°
PRM-HMA78916	0.625"	1.030"	1.060"	9/16"	7/8"	31°
PRM-HMA78916S	0.500"	1.035"	0.925"	9/16"	7/8"	
PRM-HMA100916	0.695"	1.240"	1.520"	9/16"	1"	33°
PRM-HMA100916SH	0.695"	1.050"	1.380"	9/16"	1"	39°
PRM-HMA10058N	0.695"	1.150"	1.380"	5/8"	1"	34°
PRM-HMA10058TR	0.835"	1.240"	1.520"	5/8"	1"	33°
PRM-HMA10034JR	0.310"	1.179"	1.000"	3/4"	1"	25°
PRM-HMA10034N	0.695"	1.115"	1.380"	3/4"	1"	34°
PRM-HMA10034RN	0.695"	1.250"	0.750"	3/4"	1"	33°
PRM-HMA10034TRN	0.835"	1.240"	1.520"	3/4"	1"	33°
PRM-HMA10034TCF	0.695"	1.240"	1.380"	3/4"	1"	35°
PRM-HMA10034TPRM	0.695"	1.240"	1.380"	3/4"	1"	
PRM-HMA15034TR	1.320"	1.250"	2.000"	3/4"	1-1/2"	33°
PRM-HMA15034KTK	1.500"	1.625"	2.200"	3/4"	1-1/2"	
PRM-HMA15034KTKWS	1.500"	1.625"	2.200"	3/4"	1-1/2"	
PRM-HMA15034PRM	1.065"	1.250"	1.750"	3/4"	1-1/2"	
PRM-TTHMA15034PRM	1.200"	1.625"	2.200"	3/4"	1-1/2"	
PRM-TTHMA15034PRMNS	1.200"	1.625"	2.200"	3/4"	1-1/2"	
PRM-HMA15034TTRSH	0.500"	1.035"	1.500"	3/4"	1-1/2"	

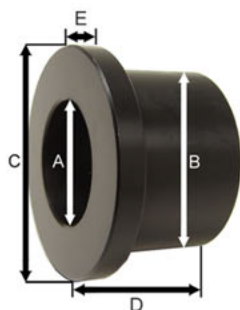
Standard Spacers

Part Number	A (Flange)	B (Head)	C (Length)	D (Bolt Size)	E (Uniball)
PRM-5812SRT	0.500"	0.860"	0.880"	1/2"	5/8"
PRM-3412SRT	0.500"	0.980"	0.945"	1/2"	3/4"
PRM-34916SRT	0.500"	0.960"	0.945"	9/16"	3/4"
PRM-7834RTR	0.340"	1.100"	0.775"	3/4"	7/8"
PRM-100345RTH	0.450"	1.750"	1.125"	3/4"	1"
PRM-10034SRTHD	0.500"	1.750"	1.200"	3/4"	1"
PRM-10034SRTHD250	0.700"	1.750"	1.400"	3/4"	1"

Bushings & Hardware

Delrin Bushings

Part Number	(A) ID	(B) Base	(C) Head	(D) Length	(E) Flange
PRM-250	.75"	1.06"	1.25"	0.75"	.165"
PRM-500	.75"	1.25"	1.61"	1.13"	.23"
PRM-600	1.00"	1.50"	1.87"	1.20"	.23"
PRM-600W	1.00"	1.50"	1.87"	1.40"	.43"
PRM-601	1.135"	1.50"	1.87"	1.20"	.23"
PRM-60414	1.00"	1.50"	2.00"	2.05"	.43"
PRM-60414S	1.00"	1.50"	2.00"	1.92"	.43"
PRM-60414PRC	1.25"	1.50"	2.00"	1.50"	.25"
PRM-60414JPS	1.25"	1.50"	2.00"	2.00"	.43"



Urethane Bushings

Part Number	(A) ID	(B) Base	(C) Head	(D) Length	(E) Flange
AFB-B100	.38"	.825"	1.00"	.69"	.195"
AFB-B125	.50"	1.07"	1.25"	1.00"	.25"
AFB-B150	.625"	1.25"	1.625"	1.15"	.25"
AFB-B175	.75"	1.50"	1.95"	1.44"	.25"
AFB-B200	.75"	1.75"	2.20"	1.47"	.25"
AFB-600069	1.00"	1.50"	2.00"	2.25"	.50"
KTK-604141	1.00"	1.50"	2.00"	1.90"	.42"



Chromoly Inner Sleeves

Part Number	Description	OD	ID	Length
PRM-ISL750173	3/4" x 2.00" Sleeve	.75	10mm	1.60
PRM-ISL750120	3/4" x 2.25" Sleeve	.75	.50	2.25
PRM-ISL100120	1" x 2.50" Sleeve	1.00	.75	2.50
PRM-ISL100120S	1" x 2.50" Sleeve	1.00	.75	2.50
PRM-ISL100120M	1" x 3.86" Sleeve	1.00	.75	3.86
PRM-ISL100120L	1" x 4.12" Sleeve	1.00	.75	4.125
PRM-ISL100188	1" x 2.5" Sleeve	1.00	.625	2.50
PRM-ISL100188S	1" x 2.5" Sleeve	1.00	.625	2.50
PRM-ISL100188W	1" x 2.85" Sleeve	1.00	.625	2.85
PRM-ISL100188M	1" x 3.86" Sleeve	1.00	.625	3.86
PRM-ISL100188L	1" x 4.125" Sleeve	1.00	.625	4.125



Chromoly Outer Sleeves

Part Number	Description	OD	ID	Length
PRM-OSL125095	1.25" x 1.6" Sleeve	1.25	1.06	1.60
PRM-OSL150120	1.50" x 1.81" Sleeve	1.50	1.25	1.81
PRM-OSL175120	1.75" x 1.96" Sleeve	1.75	1.50	1.96
PRM-OSL175120M	1.75" x 3.00" Sleeve	1.75	1.50	3.00
PRM-OSL175120L	1.75" x 3.25" Sleeve	1.75	1.50	3.25
PRM-OSL200250	2" x 2.50" Sleeve	2.00	1.50	2.50
PRM-OSL200250M	2" x 3.00" Sleeve	2.00	1.50	3.00
PRM-OSL200250L	2" x 3.25" Sleeve	2.00	1.50	3.25
PRM-OSL200250DBC	2" x 3.50" Sleeve	2.00	1.50	3.50



Assembled Bushings

These bushing assemblies include the bushings, hardware, outer and inner sleeves.

Part Number	Outside Dia.	Length
AFB-BA100	1.000"	1.500"
AFB-BA125	1.250"	2.000"
AFB-BA150	1.500"	2.250"
AFB-BA175	1.750"	3.000"
AFB-BA200	2.000"	3.000"



Bushings & Hardware

Wobble Stopper

The wobble stopper is designed for 3 & 4 link trailing arm type suspensions to combine the articulation of a standard 1" uniball with the rigidity of a composite bushing. The two slotted end caps guide the range of movement of the uniball to eliminate the rear end sway that is common with link suspension setups.

Kit Includes

- Two slotted aluminum end caps
- Two misalignment bushings for 3/4" bolts
- One weldable housing
- One 1" uniball snap ring
- Ten 10-32 x 3/8" bolts

A 1" uniball is required for this kit.



Part Number	Uniball Size	Outside Dia.	Spacer Bolt Size
PRM-9044HDWSKIT	1.000"	2.000"	3/4"

Urethane Accessories

We stock urethane bushings, grommets, mounts, and bump stops from Prothane, SACO, and AutoFab. Urethane is a more affordable alternative to Derlin for use as a bushing and application specific kits for truck and VW suspensions are available that replace the stock rubber bushings. Call for more information on available urethane products.



Heim Extension Pins

These heim extension pins allow for the use of standard heims to be used in applications that use a tapered ball joint, such as a VW spindles designed for Ford or International tie rod ends.

Part Number	Heim Side	Taper Side
PRM-HEP58916	5/8"	9/16"
PRM-HEP58580	5/8"	5/8"



Chromoly Weld Washers

These weld washers are CNC machined from chromoly and are used to reinforce both the steel plate and bolt surface. Sold in sets of four.

Part Number	Bolt Size
CAM-040016	9/16"
PRM-1/2RWW	1/2"
PRM-1/2RWWT	1/2" Tall Flange
PRM-5/8RWW	5/8"
PRM-3/4RWW	3/4"



Washers & Nuts

KARTEK sells grade 8 washers, lock washers, nylon nuts, castle nuts, stover nuts, & lug nuts in a wide selection of sizes.



F911 Bolts

With the F911 hex cap screws, each bolt is 20% stronger than Grade-8, and can withstand the harshest off-road racing conditions. These are a great choice when using them with our bushings & heims.

Available Sizes:

3/8" -24 Thread	Length	7/16" -20 Thread	Length	1/2" -20 Thread	Length	9/16" -18 Thread	Length
HAR-911F375100	- 1"	HAR-911F437100	- 1"	HAR-911F50150	- 1-1/2"	HAR-911F563200	- 2"
HAR-911F375125	- 1-1/4"	HAR-911F437225	- 2-1/4"	HAR-911F50200	- 2"	HAR-911F563350	- 3-1/2"
HAR-911F375150	- 1-1/2"	HAR-911F437325	- 3-1/4"	HAR-911F50250	- 2-1/2"	HAR-911F563450	- 4-1/2"
HAR-911F375175	- 1-3/4"	HAR-911F437350	- 3-1/2"	HAR-911F50275	- 2-3/4"	HAR-911F563550	- 5-1/2"
HAR-911F375200	- 2"	HAR-911F437550	- 5-1/2"	HAR-911F50300	- 3"	HAR-911F563600	- 6"
HAR-911F375225	- 2-1/4"	HAR-911F437600	- 6"	HAR-911F50325	- 3-1/4"	HAR-911F563700	- 7"
HAR-911F375250	- 2-1/2"			HAR-911F50350	- 3-1/2"	HAR-911F563750	- 7-1/2"
HAR-911F375275	- 2-3/4"			HAR-911F50375	- 3-3/4"	HAR-911F563800	- 8"
HAR-911F375300	- 3"			HAR-911F50400	- 4"		
HAR-911F375325	- 3-1/4"			HAR-911F50450	- 4-1/2"		
HAR-911F375350	- 3-1/2"			HAR-911F50500	- 5"		
HAR-911F375375	- 3-3/4"			HAR-911F50550	- 5-1/2"		
HAR-911F375400	- 4"			HAR-911F50600	- 6"		
HAR-911F375450	- 4-1/2"			HAR-911F50650	- 6-1/2"		
HAR-911F375500	- 5"			HAR-911F50700	- 7"		
HAR-911F375550	- 5-1/2"			HAR-911F50750	- 7-1/2"		
HAR-911F375600	- 6"			HAR-911F50800	- 8"		

5/8" -18 Thread	Length	3/4" -16 Thread	Length
HAR-911F625200	- 2"	HAR-911F750200	- 2"
HAR-911F625250	- 2-1/2"	HAR-911F750225	- 2-1/4"
HAR-911F625300	- 3"	HAR-911F750250	- 2-1/2"
HAR-911F625350	- 3-1/2"	HAR-911F750300	- 3"
HAR-911F625375	- 3-3/4"	HAR-911F750350	- 3-1/2"
HAR-911F625400	- 4"	HAR-911F750400	- 4"
HAR-911F625450	- 4-1/2"	HAR-911F750450	- 4-1/2"
HAR-911F625500	- 5"	HAR-911F750500	- 5"
HAR-911F625550	- 5-1/2"	HAR-911F750550	- 5-1/2"
HAR-911F625600	- 6"	HAR-911F750600	- 6"
HAR-911F625650	- 6-1/2"	HAR-911F750700	- 7"
HAR-911F625700	- 7"	HAR-911F750800	- 8"
HAR-911F625750	- 7-1/2"	HAR-911F750850	- 8-1/2"
		HAR-911F750900	- 9"



*Nuts, washers & other sizes available

12-Point Flange Bolts

These 12-point flange bolts are made from 8740 alloy steel which is an aircraft grade material used in applications like engine head & rod bolts for it's ability to resist being stretched, deformed, or sheared under high stress loads. They are ideal for off road suspension applications, such as with spindle uprights and heims.

Part Number	Size	Length
PRM-3/4X312SB	3/4"-16	3-1/2"
PRM-3/4X400SB	3/4"-16	4"
PRM-3/4X412SB	3/4"-16	4-1/2"
PRM-3/4X500SB	3/4"-16	5"
PRM-3/4X512SB	3/4"-16	5-1/2"
PRM-3/4X600SB	3/4"-16	6"
PRM-3/4X612SB	3/4"-16	6-1/2"
PRM-3/4X712SB	3/4"-16	7-1/2"
PRM-3/4X812SB	3/4"-16	8-1/2"
PRM-3/4X912SB	3/4"-16	9-1/2"
PRM-3/4X13SB	3/4"-16	13"
PRM-3/4X1314SB	3/4"-16	13-1/4"
PRM-3/4X14SB	3/4"-16	14"
PRM-3/4X1414SB	3/4"-16	14-1/4"
PRM-3/4X1412SB	3/4"-16	14-1/2"
PRM-3/4X15SB	3/4"-16	15"
PRM-3/4X16SB	3/4"-16	16"
PRM-3/4X17SB	3/4"-16	17"
PRM-3/4X1750SB	3/4"-16	17-1/2"



Tube Hardware

Aluminum End Caps

These billet aluminum end caps are designed to cap off the end of an open tube or bumper end. Sold in pairs.

Part Number	Size Tubing	Finish
KTK-EC150A	1-1/2" x 0.120 wall	Satin
KTK-EC175A	1-3/4" x 0.120 wall	Satin
KTK-EC200A	2" x 0.120 wall	Satin
KTK-EC150AB	1-1/2" x 0.120 wall	Black
KTK-EC175AB	1-3/4" x 0.120 wall	Black
KTK-EC200AB	2" x 0.120 wall	Black



Tubing End Caps

These flat tubing caps are used to cap off the end of an open tube. Welding required. Sold in pairs.

Part Number	Size Tubing
TAB-AA02211B	7/8"
TAB-AA0221B	1-1/4"
TAB-AA0222B	1-1/2"
BWS-0223B	1-3/4"
TAB-AA0225B	2"



Two Bolt Flanges

Part Number	Tube Size	Thickness	Sold In
TAB-AA130A	1"	3/16"	Pairs
THU-7255	1-1/2"	1/4"	Pairs
THU-7255HD	1-1/2"	5/16"	Single
THU-7253	1-3/8"	1/4"	Pairs
THU-7253HD	1-3/8"	5/16"	Single
DEE-2505	1-3/8"	1/4"	Four
DEE-250512	1-5/8"	1/4"	Four
THU-7257HD	1-5/8"	5/16"	Single
THU-7259HD	1-3/4"	5/16"	Single



Three Bolt Flanges

Part Number	Tube Size	Thickness	Sold In
PRM-04010	1-1/2"	3/16"	Single

Tube Clamps

Tube clamps are the easiest way to make a section of a chassis removable. Many of our customers use tube clamps on the rear of their cars for easy engine removal as well as for light bars and front bumpers. Made from 4130 chromoly.

Part Number	Tubing Size
CAM-040012	1" x .065 wall tubing
CAM-040011	1" x .095 wall tubing
CAM-040010	1-1/4" x .065 wall tubing
CAM-040009	1-1/4" x .095 wall tubing
CAM-040008	1-1/4" x .120 wall tubing
CAM-040007	1-1/2" x .065 wall tubing
CAM-040006	1-1/2" x .095 wall tubing
CAM-040005	1-1/2" x .120 wall tubing
CAM-040087	1-5/8" x .120 wall tubing
CAM-040004	1-3/4" x .095 wall tubing
CAM-040003	1-3/4" x .120 wall tubing
CAM-040001	2" x .120 wall tubing



Compression Clamps

Part Number	Tubing Size
PRM-04094	1"
SUS-04095	1-1/4"
SUS-04096	1-1/2"
SUS-04099	2"
SUS-04098	2-1/4"



Chromoly Tubing

All chromoly tubing is sold per foot.

Part Number	Tube Size
HAR-CMT500049	1/2" Dia. x 0.049" wall
HAR-CMT750083	3/4" Dia. x 0.083" wall
HAR-CMT750095	3/4" Dia. x 0.095" wall
HAR-CMT750120	3/4" Dia. x 0.120" wall
HAR-CMT875095	7/8" Dia. x 0.095" wall
HAR-CMT100083	1" Dia. x 0.083" wall
HAR-CMT100095	1" Dia. x 0.095" wall
HAR-CMT100120	1" Dia. x 0.120" wall
HAR-CMT100156	1" Dia. x 0.156" wall
HAR-CMT100188	1" Dia. x 0.188" wall
HAR-CMT100250	1" Dia. x 0.250" wall
HAR-CMT1125095	1-1/8" Dia. x 0.095" wall
HAR-CMT1125120	1-1/8" Dia. x 0.120" wall
HAR-CMT1125250	1-1/8" Dia. x 0.250" wall
HAR-CMT1250095	1-1/4" Dia. x 0.095" wall
HAR-CMT1250120	1-1/4" Dia. x 0.120" wall
HAR-CMT1250188	1-1/4" Dia. x 0.188" wall
HAR-CMT1250250	1-1/4" Dia. x 0.250" wall
HAR-CMT150049	1-1/2" Dia. x 0.049" wall
HAR-CMT150095	1-1/2" Dia. x 0.095" wall
HAR-CMT150120	1-1/2" Dia. x 0.120" wall
HAR-CMT1625120	1-5/8" Dia. x 0.120" wall
HAR-CMT175095	1-3/4" Dia. x 0.095" wall
HAR-CMT175120	1-3/4" Dia. x 0.120" wall



Steel U-Bend

Part Number	Tube Size
PRM-UB125125	1-1/4" Dia. x 0.065" wall
PRM-UB138138	1-3/8" Dia. x 0.065" wall
PRM-UB150150	1-1/2" Dia. x 0.065" wall
PRM-UB158158	1-5/8" Dia. x 0.065" wall
PRM-UB175175	1-3/4" Dia. x 0.065" wall
PRM-UB178178	1-7/8" Dia. x 0.065" wall
PRM-UB200200	2" Dia. x 0.065" wall
PRM-UB250250	2-1/2" Dia. x 0.065" wall
PRM-UB300300	3" Dia. x 0.065" wall



Steel 90° Elbow

Part Number	Tube Size
PRM-90300	3" Dia. x 0.065" wall
PRM-90350	3-1/2" Dia. x 0.065" wall
PRM-90400	4" Dia. x 0.065" wall



Tube Hardware

Aluminum Tubing

All aluminum tubing is sold per foot.

Part Number	Tube Size
HAR-ALT100250	1" Dia. x 0.025" wall
HAR-ALT100	1" Dia. x 0.049" wall
HAR-ALT125	1-1/4" Dia. x 0.049" wall
HAR-ALT150	1-1/2" Dia. x 0.049" wall
HAR-ALT1625	1-5/8" Dia. x 0.049" wall
HAR-ALT175	1-3/4" Dia. x 0.049" wall
HAR-ALT200	2" Dia. x 0.049" wall
HAR-ALT225	2-1/4" Dia. x 0.049" wall
HAR-ALT250	2-1/2" Dia. x 0.049" wall
HAR-ALT300	3" Dia. x 0.065" wall
HAR-ALT400	4" Dia. x 0.065" wall



Aluminum U-Bend

Part Number	Tube Size
PRM-UB125125AL	1-1/4" Dia. x 0.065" wall
PRM-UB150150AL	1-1/2" Dia. x 0.065" wall
PRM-UB158158AL	1-5/8" Dia. x 0.065" wall
PRM-UB175175AL	1-3/4" Dia. x 0.065" wall
PRM-UB200200AL	2" Dia. x 0.065" wall
PRM-UB250250AL	2-1/2" Dia. x 0.065" wall
PRM-UB300300AL	3" Dia. x 0.065" wall



Aluminum 90° Elbow

Part Number	Tube Size
PRM-90400AL	4" Dia. x 0.065" wall



Exhaust Systems

Steel Megaphone

For building your own VW Exhaust system with a stinger.

Part Number	Size
KTK-2500005	3" Dia.
KTK-2500006	3-1/2" Dia.



Flanges & Collectors



LS Header Flanges
PRM-LS1Flange - LS1 1-7/8" Header Flange
PRM-LS7FLANGE - LS7 2" Header Flange



O2 Sensor Bung & Plug
KTK-O2BUNG - Sensor Bung
KTK-O2PLUG - Sensor Plug



LS1 1-3/4" To 3" Collector
PRM-LS1EC134

Crossover Tubes

These crossover tubes allow for maximum performance by equalizing the exhaust of both banks of an LS series engine. The tubes are available as raw or jet coated and include the flanges for adapting SuperTrapp spark arrestors.

Part Number	Size Tubing	Finish
PRM-CROVTUBEW	LS 3" Crossover	Raw
PRM-CROVTUBEW	LS 3" Crossover	Coated



LS Series Headers

These KARTEK exclusive LS sandrail headers come in a variety of combinations to fit your specific application.

Part Number	Primarys	Crossover	Mufflers	Finish
PRM-LS1H	1.75"	No	No	Raw
PRM-LS1WC	1.75"	Yes	No	Raw
PRM-LS1WCC	1.75"	Yes	No	Coated
PRM-LS1WCC2	2"	Yes	No	Coated
PRM-LS1M	1.75"	No	Yes	Raw
PRM-LS1MC	1.75"	No	Yes	Coated
PRM-LS1MC2	2"	No	Yes	Coated



VW Race Headers

These exclusive VW race headers are designed with offroad racing in mind with thick 3/8" flanges, allow easy access to the valves, and a support brace for the stinger. Available in different primary sizes and the option of being jet coated. Some versions are for the 1600 class while others come with a SuperTrapp muffler.

Part Number	Primarys	Type	Finish
PRM-3105RAC	1-3/8"	1600	Raw
PRM-3106RAC	1-3/8"	1600	Coated
PRM-3101RAC	1-1/2"	Race	Raw
PRM-3102RAC	1-1/2"	Race	Coated
PRM-3103RAC	1-5/8"	Race	Raw
PRM-3104RAC	1-5/8"	Race	Coated
PRM-3103SUP	1-5/8"	w/ SuperTrapp	Raw
PRM-3104SUP	1-5/8"	w/ SuperTrapp	Coated



Louvered Muffler

This muffler is a straight thru design that uses louvered baffles to help reduce the db level. The straight thru design also minimizes back pressure allowing for added horsepower.

Part Number	Muffler Size	Inlet	Outlet	Finish
KTK-5300	5" Dia, 13" Long	3"	3"	Raw



Center Bolt Spark Arrestors

Lightweight, US Forest Service approved spark arrestors. These arrestors can be easily welded on the end of your exhaust system or muffler. The sound & performance level can be adjusted with the number of disc added and removed. These arrestors utilize a center bolt for a compact and affordable design. Assemblies include the adapter, discs, end cap, and hardware.

Part Number	Description
SUP-3441705	3" Disc for 1-3/4" Pipe Spark Arrestor Assembly
SUP-3442005	3" Disc for 2" Pipe Spark Arrestor Assembly
SUP-3443004	3" Disc for 3" Pipe Spark Arrestor Assembly



Exhaust Systems

Universal Spark Arrestors

Like the center bolt arrestors, these 4" and 5" spark arrestors are US Forest Service approved and can be easily welded on the end of your exhaust system or muffler. These arrestors also feature larger disc and allow you to fine tune your exhaust's sound and performance. These arrestors utilize allen bolts for easier installation and for using larger discs. These assemblies include the adapter, discs, end cap, shield, and hardware.



Part Number	Description
SUP-4442003	4" Disc for 2" Pipe Spark Arrestor Assembly
SUP-4442503	4" Disc for 2-1/2" Pipe Spark Arrestor Assembly
SUP-4443503	4" Disc for 3-1/2" Pipe Spark Arrestor Assembly
SUP-5442503	5" Disc for 2-1/2" Pipe Spark Arrestor Assembly
SUP-5443003	5" Disc for 3" Pipe Spark Arrestor Assembly
SUP-5443503	5" Disc for 3-1/2" Pipe Spark Arrestor Assembly

SuperTrapp Mufflers

SuperTrapp's clamp on glasspack mufflers feature the US Forest Service approved 4" & 5" spark arrestors. The standard series has a hi-temp black coat on a steel body and the Elite series has a satin finish T-304 stainless steel body. Both have a stainless steel core.



Part Number	Size	Body
SUP-4492018	4" Disc x 18.5" Long x 2" Pipe	Black
SUP-4492218	4" Disc x 18.5" Long x 2.25" Pipe	Black
SUP-4492518	4" Disc x 18.5" Long x 2.5" Pipe	Black
SUP-5492519	5" Disc x 18.5" Long x 2.5" Pipe	Black
SUP-5493019	5" Disc x 18.5" Long x 3" Pipe	Black
SUP-5493514	5" Disc x 14" Long x 3.5" Pipe	Black
SUP-5493519	5" Disc x 18.5" Long x 3.5" Pipe	Black
SUP-4432010	4" Disc x 10" Long x 2.25" Pipe	Stainless
SUP-4432017	4" Disc x 17" Long x 2" Pipe	Stainless
SUP-4432217	4" Disc x 17" Long x 2.25" Pipe	Stainless
SUP-5432519	5" Disc x 19" Long x 2.5" Pipe	Stainless
SUP-5433019	5" Disc x 19" Long x 3" Pipe	Stainless
SUP-5433519	5" Disc x 19" Long x 3.5" Pipe	Stainless

Steering Components

Rack & Pinion Mounts

Laser cut and made from 3/16" thick steel, these mounts will simplify the task of mounting your rack & pinion.



Std. Wide Beam Mount

Part Number	Description
PRM-03101CM	Standard Wide Beam Mount
SUS-03101T	1" Taller Wide Beam Mount



Part Number	Description
SUS-03103CM	Rack Mount Tabs, Pair

Steering Shaft Tabs

Part Number	Description
PRM-03059HD	3 Bolt Heavy Duty Tab for 3/4" Shaft
SUS-03059	3 Bolt Tab for 3/4" Shaft
SUS-03059A	3 Bolt Tab for 7/8" Shaft



3-Bolt Heavy Duty w/ 3/4" Hole

Steering Shaft Brackets

Part Number	Description
TAB-AA069A	2-1/4" Long Steering Shaft Bracket
TAB-AA069B	4" Long Steering Shaft Bracket
TAB-AA066A	8" Long Steering Shaft Bracket



2-1/4" Steering Shaft Bracket

Adjustable Steering Columns

These adjustable steering columns feature 7 adjustable tilt settings. They use the standard 3/4" shaft and are available for chassis using 1-1/2" and 1-3/4" tubing.

Part Number	Description
KTK-02010	Adjustable steering column for 1-1/2" tubing
KTK-02010175	Adjustable steering column for 1-3/4" tubing
KTK-02010B	Bushing for adjustable column



Adjustable Steering Column

Solid Steering Shaft Columns

Part Number	Description
SUS-03111	3/4" Steering Column w/ Bracket
SUS-03111B	Steering Shaft Bushing for SUS-03111



3/4" Steering Column w/ Bracket

Billet Steering Wheel Adapters

Part Number	Description
PRM-MMAP	3 to 6 Bolt MOMO/Sparco Steering Wheel Adapter
PRM-MMAPC	Satin Cap for PRM-MMAP
PRM-MMAPCB	Black ProAm Cap for PRM-MMAP
MRB-169543	5-Bolt Grant Steering Wheel Adapter



Steering Wheel Quick Disconnects



Part Number	Description	Part Number	Description	Part Number	Description
SWT-80170055	Sweet 6-Bolt Aluminum	WIL-2702016	Wilwood 3-Bolt	KTK-13430	Joel's Rhino 3-Bolt
SWT-80170004	Sweet 3-Bolt Aluminum	WIL-3002019	Stub, 1-3/4" Long	KTK-13434	Joel's Teryx 3-Bolt
SWT-80170001	Sweet 3-Bolt Steel				
SWT-80170008	3-Bolt Stub, 3" Long				
SWT-80170052	6-Bolt Stub, 3-3/4" Long				

Steering Components

U-Joints

Designed specifically for use in race cars, Sweet universal joints are strong and precise with "no stop." Compact, lightweight and durable, the u-joints are capable of 32 degrees of working angle.

Universal Joints

Part Number	Description	Common Usage	
SWT-0606	3/4" Smooth x 3/4" Smooth	SACO/Small ProAm/Trophy Kart/Fine Sweet Howe/Fortin/Ford/ProAm Coarse Sweet	
SWT-0610	3/4" Smooth x 3/4"-48 Spline		
SWT-0612	3/4" Smooth x 3/4"-36 Spline		
SWT-0615	3/4" Smooth x 3/4"-30 Spline	VW/Mendeola	
SWT-0621	3/4" Smooth x 3/4"-20 Spline		
SWT-0608	3/4" Smooth x 5/8" Smooth	Large Howe/Old Chevy VW/Mendeola	
SWT-0607	3/4" Smooth x 5/8"-36 Spline		
SWT-0614	3/4" Smooth x 9/16"-36 Spline		
SWT-0613	3/4" Smooth x 9/16"-26 Spline	SACO/Small ProAm/Trophy Kart/Fine Sweet	
SWT-0611	3/4" Smooth x 13/16"-36 Spline		
SWT-0635	3/4" Smooth x 19/32" Smooth		
SWT-0634	3/4" Smooth x 19/32"-29 Spline	New Chevy	
SWT-0618	3/4" Smooth x 1"-48 Spline		
SWT-1010	3/4"-48 Spline x 3/4"-48 Spline		
SWT-1012	3/4"-48 Spline x 3/4"-36 Spline		
SWT-1015	3/4"-48 Spline x 3/4"-30 Spline		
SWT-1021	3/4"-48 Spline x 3/4"-20 Spline		
SWT-1011	3/4"-48 Spline x 13/16"-36 Spline		
SWT-0710	3/4"-48 Spline x 5/8"-36 Spline		
SWT-1212	3/4"-36 Spline x 3/4"-36 Spline		UTV
SWT-1215	3/4"-36 Spline x 3/4"-30 Spline		
SWT-1515	3/4"-30 Spline x 3/4"-30 Spline		
SWT-1111	13/16"-36 Spline x 13/16"-36 Spline		
SWT-1112	13/16"-36 Spline x 3/4"-36 Spline		
SWT-1115	13/16"-36 Spline x 3/4"-30 Spline		
SWT-0808	5/8" Smooth x 5/8" Smooth		
SWT-0813	5/8" Smooth x 9/16"-24 Spline		
SWT-0708	5/8" Smooth x 5/8"-36 Spline		
SWT-0707	5/8"-36 Spline x 5/8"-36 Spline		
SWT-1313	9/16"-26 Spline x 9/16"-26 Spline		
SWT-0619	3/4" Double D x 3/4" Smooth		
SWT-0620	3/4" Double D x 3/4" Smooth		
SWT-1019	3/4" Double D x 3/4"-48 Spline		
SWT-1219	3/4" Double D x 3/4"-36 Spline		
SWT-1919	3/4" Double D x 3/4" Double D		
SWT-1920	3/4" Double D x 1" Double D		
SWT-1223	1" Double D x 3/4"-36 Spline		
SWT-2021	1" Double D x 3/4"-20 Spline		
SWT-2020	1" Double D x 1" Double D		
SWT-0624	Jeep Flat x 3/4" Smooth		
SWT-1224	Jeep Flat x 3/4"-36 Spline		
SWT-0824	Jeep Flat x 5/8" Smooth		
SWT-0632KTK	Charlynn x 3/4" Smooth		
SWT-1232KTK	Charlynn x 3/4"-30 Spline		
SWT-1032KTK	Charlynn x 3/4"-48 Spline		



Universal Joint



Double Universal Joint

Double U-Joints

Part Number	Description
SWT-80606	80° 3/4" Smooth x 3/4" Smooth
SWT-80610	80° 3/4" Smooth x 3/4"-48 Spline
SWT-80615	80° 3/4" Smooth x 3/4"-30 Spline
SWT-81919	80° 3/4" Smooth x 3/4" Double D

Pre-Splined Shafts

Part Number	Length	Spline
PRM-SS3/4	2.5"	3/4" -48
PRM-1FSS3/4	1'	3/4" -48
PRM-2FSS3/4	2'	3/4" -48
PRM-3FSS3/4	3'	3/4" -48
PRM-4FSS3/4	4'	3/4" -48
PRM-5FSS3/4	5'	3/4" -48



Pre-Splined Shafts

Shaft Couplers

Part Number	Description	Common Usage
SWT-30130100	3/4" -48 Spline	Sweet
SWT-30130120	3/4" -36 Spline	Howe/Ranger
SWT-30130150	3/4" -20 Spline	New Chevy
SWT-30130130	9/16" -26 Spline	Chevy Manual
SWT-30130140	5/8" -36 Spline	Stilleto
SWT-30130110	13/16" -36 Spline	Old Chevy
SWT-0170	3D Jeep Spline	3D Jeep



Coupler

Shaft Couplers Locks

Part Number	Description
CNW-SSC34	3/4" Shaft Collar Lock
CNW-SSC78	7/8" Shaft Collar Lock



Shaft Collar Lock

Charlynn Torque Generator System



Charlynn Torque
Generator
SWT-CTG



Charlynn Mount
PRM-CPMB



Race Donut Kit
SUS-03134



Charlynn U-Joints
SWT-0632KTK - 3/4" Smooth to Charlynn
SWT-1032KTK - 3/4" 48-spline to Charlynn
SWT-1232KTK - 3/4" 36-spline to Charlynn



Charlynn Keyed Coupler
SWT-CKC



Charlynn Port Block
PRM-CHF

Steering Components

Coleman Steering Quickeners



Small Billet Aluminum Quickener
COL-22370 - 2 to 1 Ratio
COL-22369 - 1.5 to 1 Ratio



Large Cast Aluminum Quickener
COL-135100 - 2 to 1 Ratio
COL-131100 - 1.5 to 1 Ratio

Power Steering Reservoirs



Howe Reservoir Tank
HOW-1010 - Reservoir w/ Filter



ProAm Billet Reservoir Tanks
PRM-PSR1300 - Standard Reservoir
PRM-PSR1300F - Standard Reservoir w/ Filter
PRM-PSR2000F - Trophy Truck Reservoir w/ Filter



Sweet Reservoir Tank
SWT-30074 - 7" Reservoir

Power Steering Reservoir Mounts

Part Number	Description
PRM-PSRCLAMP	Clamp for PRM-PSR1300/30074
PRM-HCLAMP	3-1/2" Clamp for PRM-PSR2000F & HOW-1010
PRM-11851	Weld on tab for PS Reservoir Clamps



Power Steering Components

Power steering components from Sweet, Coleman, and Howe are available at KARTEK. We stock everything needed for buggies and trucks for a total power steering system, such as pumps, servos, fittings, hoses, mounts, pulleys, assist rams, and coolers.



Rack & Pinions

KARTEK sells steering rack and pinions from the leaders in the off road industry, such as Howe, Fortin, SACO, and ProAm. Manual and power racks are available for buggies, trucks, and Jeeps with either a beam or A-Arm front suspension.



Body Panels & Hardware

Truck Fiberglass

KARTEK offers a wide variety of fiberglass fenders, bedsides and hoods from Glassworks Unlimited, Hannermann Fiberglass, & FiberwerX for most popular truck models. These panels can be ordered in a variety of flare sizes for different suspension and tire combinations.

Call our Truck Department to have our trained sales staff assist you in choosing the correct panels for your specific application.



Baja Fiberglass

With the increasing rarity of quality Bug shells, the difficulty of obtaining replacement panels for a Baja Bug also increases along with the expense of importing cars from outside of California and Arizona. Thanks to determined Class 5 racers to keep these cars alive, KARTEK offers Class 5 Unlimited / Baja Bug fiberglass and aluminum panels & fenders.

Call our Buggy Department for more information and availability.



UTV Panels, Skid Plates & Bumpers

New to KARTEK is HCR's, Pro Armor's, and Pro One's lines for UTV's. Body panels, bumpers, skid plates, reinforcement bulkheads, and doors are now available for the Teryx, RZR, and Rhino.

Call or visit our website for more information on what is now available.



Specialty Latches



Push Button Latch
KTK-PBLATCH - for Aluminum



Body Latch Assembly
KTK-LATCH - for Fiberglass

Fiberglass Panel Mounts

Part Number	Description
AFB-FM100B	Blue Fiberglass Panel Mount
AFB-FM100	Black Fiberglass Panel Mount



Body Panels & Hardware

Hood Pin Assemblies

Part Number	Description
AFB-HP100BK	Black Hood Pin Assembly
AFB-HP100OR	Orange Hood Pin Assembly
AFB-HP100YL	Yellow Hood Pin Assembly
AFB-HP100BL	Blue Hood Pin Assembly
AFB-HP100RD	Red Hood Pin Assembly
AFB-HP100WH	White Hood Pin Assembly
AFB-UG100	Hood Pin Bushing Only
AFB-TETH100	Hood Pin Clip w/Tether



Aluminum Body Washers

Part Number	Description
PRM-5/16ABWB	Black Aluminum 5/16" Countersunk Body Washer
PRM-5/16ABW	Satin Aluminum 5/16" Countersunk Body Washer
KTK-71610AL	Satin Aluminum Dzus Countersunk Body Washer
HAR-516100	5/16"-24 x 1" Countersunk Allen Bolt



Body Panel Tabs

Part Number	Description
PRM-11052	2" Long w/ 5/16" Thread Locking Nutsert
PRM-11053	3" Long w/ 5/16" Thread Locking Nutsert
PRM-11054	4" Long w/ 5/16" Thread Locking Nutsert



Dzus Fastener Tabs



No. 6 Spring Dzus Tabs
MSP-MS946S - Short 1-1/2" Tab
MSP-MS946T - Tall 3" Tab



Lightweight Dzus Tabs
MSP-MS946 - Light Tab No. 6 Spring
MSP-MS945 - Light Tab No. 5 Spring



Dzus Tab Springs
MSP-MS6-375 - No. 6 S-Spring
MSP-MS5-325 - No. 5 S-Spring



Dzus 2" Tab w/ No.6 Spring
DEE-5518-12



Aluminum Countersunk Washer
MSP-RPD



Plastic Fastener Washers
KTK-71610 - 25 Pack

Dzus Fastener Tools



Clecos Tools
MSP-CLECOCP - Clecos Pliers
MSP-CLECOS - 1/8" Panel Clecos



Dzus Dimple Die
MSP-MSDT1



Dzus Button Tool
SUS-07107



Dzus Button Driver
MSP-DRIVER

Dzus Fasteners

For mounting sheet metal and fiberglass, Dzus fasteners are the most practical fasteners requiring only one tool. Dzus fasteners have been used in off-road racing for years due to their lightweight and durable design. Available in a variety of sizes to fit your specific needs.



Countersunk Studs

Part Number	Material	Length	Spring
MSP-MSF06540	Steel	.40"	6
MSP-MSF06545	Steel	.45"	6
MSP-MSF06550	Steel	.50"	6
MSP-MSF06555	Steel	.55"	6
MSP-MSF06560	Steel	.60"	6
MSP-MSF06565	Steel	.65"	6
MSP-MSF06555A	Aluminum	.55"	6



Domed Studs

Part Number	Material	Length	Spring
MSP-MSA06540	Steel	.40"	6
MSP-MSA06545	Steel	.45"	6
MSP-MSA06550	Steel	.50"	6
MSP-MSA06555	Steel	.55"	6
MSP-MSA06560	Steel	.60"	6
MSP-MSA06565	Steel	.65"	6
MSP-MSA06550A	Aluminum	.50"	6
MSP-MSA06555A	Aluminum	.55"	6



Winged Studs

Part Number	Material	Length	Spring
MSP-MSA0540W	Steel	.40"	5
MSP-MSA0550W	Steel	.50"	5
MSP-MSA06550W	Steel	.50"	6
MSP-MSA06555W	Steel	.55"	6



Allen Head Buttons

Part Number	Material	Length	Spring
FBR-FB55F	Steel	.55"	6
FBR-FB55FA	Aluminum	.55"	6



Countersunk Self-Eject Studs

Part Number	Material	Length	Spring
MSP-MSEHF540	Steel	.40"	5
MSP-MSEHF545	Steel	.45"	5
MSP-MSEHF550	Steel	.50"	5
MSP-MSEHF555	Steel	.55"	5
MSP-MSEHF560	Steel	.60"	5
MSP-MSEHF565	Steel	.65"	5
MSP-MSEHF640	Steel	.40"	6
MSP-MSEHF645	Steel	.45"	6
MSP-MSEHF650	Steel	.50"	6
MSP-MSEHF655	Steel	.55"	6
MSP-MSEHF660	Steel	.60"	6
MSP-MSEHF665	Steel	.65"	6



Winged Self-Eject Studs

Part Number	Material	Length	Spring
MSP-MSEHF640W	Steel	.40"	6
MSP-MSEHF650W	Steel	.50"	6
MSP-MSEHF655W	Steel	.55"	6
MSP-MSEHF665W	Steel	.65"	6

Mounts & Brackets

Battery Boxes

These fully weldable battery boxes can be placed anywhere on a car and will hold your battery in place without breaking loose. Using four bolts, the top strap secures the battery to the base plate and allows for easy removal. Hardware not included.

Part Number	Battery	Mount Style
PRM-555513A	Airborne PS1234	Upright
PRM-1200BB	Odyssey 1200MJT	Upright
PRM-925SBB	Odyssey 925MJT	Side
PRM-925FBB	Odyssey 925MJT	Flat
PRM-5555OPTIMA	Optima Red & Yellow	Upright
PRM-55D51BB	Optima D51 Yellow	Upright
PRM-55D51FBB	Optima D51 Yellow	Flat
PRM-5556FBB	Optima 6 Volt	Flat



HID Ballast Boxes

These mounts are ideal for mounting the ballast of HID lights that use external ballasts. They feature a radius built in for easy welding to steel tubing. Available in single, double, triple pack configurations.

Part Number	Description
PRM-HIDBB001	Single Ballast Mount
PRM-HIDBB002	Double Ballast Mount
PRM-HIDBB123	Triple Ballast Mount
PRM-10781	Hella Gen 4 Ballast Mount



HID Light & Ballast Combined Boxes

These mounts are used for a single HID light and it's external ballast on the same tab to save space and easier mounting.

Part Number	Description
PRM-04152BB	Single Box & Light Mount
PRM-10681	Hella Gen 4 Ballast & Light Mount



Light Tabs



HID Light Tab
PRM-04152 - 1/2" Hole



Flat Light Tab
BWS-115 - 1/2" Hole



Radius Light Tab
DEE-3523 - 2-3/8" Long 1/2" Hole

Universal Light Bars

Universal light bars are available in a variety of different sizes which can be easily mounted on any buggy, truck, or UTV. Besides the standard sizes, custom sizes can be special ordered. The light bars can mount 4", 6" & 8" HID & halogen lights and are perfect for Baja Design, Hella, & ACRO lights. The bars are fully tabbed for lights and struts. Steel and aluminum versions are available.

Call for available sizes.



Aluminum Rear Light Boxes

These rear light boxes are easy to mount and include a rubber grommet for the wiring. They are available in three sizes; a 29-1/2" for 3 lights, 39-1/4" for 4 lights, and 47-3/4" for 5 lights. They fit 6" oval lights such as the Maxxima line of LED lights.

Part Number	Description
KTK-10273	29-1/2" 3 Slot Aluminum Tail Light Box
KTK-10276	39-1/4" 4 Slot Aluminum Tail Light Box
KTK-10279	47-3/4" 5 Slot Aluminum Tail Light Box



Mirror Brackets



Mirror Tab, Pair
BWS-127



Side Mirror Brackets
PRM-1000MB - For 1" Tubing
PRM-1500MB - For 1.5" Tubing
PRM-1750MB - For 1.75" Tubing

Mirrors

Part Number	Description
BSR-S4S	6" Convex Stainless Steel Mirror
BSR-S4B	6" Convex Black Mirror
BSR-S4FB	6" Flat Black Mirror
BSR-S2S	5" Convex Stainless Steel Mirror
BSR-S2B	5" Convex Black Mirror
BSR-S2FB	5" Flat Black Mirror
BSR-0D600	Two Seat Race Mirror
KTK-1750	All View 18" x 2.5" Convex Mirror



6" Convex



Two Seat

Oil Filter Mounts

Part Number	Description
SUS-04120	Center Mount for 3-Bolt Remote Filter Mounts
SUS-04122	Right Side Mount for 3-Bolt Remote Filter Mounts
SUS-04123	Left Side Mount for 3-Bolt Remote Filter Mounts
PRM-04121	Center Mount for Remote Billet Filter Mount (PRM-HP1BRM)



Center Mount for 3-Bolt Remote Mounts



Center Mount for Billet Filter Mount



Side Mount for 3-Bolt Remote Mounts

Fresh Air Pump

Ideal in offroad racing for providing fresh air to the driver and co-driver. Hoses available in 2 ft. to 12 ft. lengths along with filters and replacement parts.

Part Number	Description
CAC-DSFPA	Race Air Pump w/ Short Filter & Dual Outlet
BSR-SSPA	Parker Pumper Dual Speed, Single Seat
PRM-PSRCLAMP	Air Pumper Clamp



Race Air Pump

Mounts & Brackets

Radio Brackets

These brackets are the best solution for securely mounting the RoadMaster, ICOM, or Vertex radio. Simply weld the bracket under your dash panel, slide the radio in, then mount with the 4 screw holes pre-drilled into the side of the bracket.

Part Number	Description
PCI-WIB	For Roadmaster Radio
PCI-WIB1	For ICOM 121
PCI-ICWB	For Comlink 6 Racing Intercom
PCI-WIBVERTEX	For Vertex Radio



GPS Mounts



Lowrance GPS Mount
PRM-19042



Lowrance GPS Antenna Mount
PRM-19041

Heat Exchanger Mount

When using a high horsepower engine and transmission combo, a heat exchanger will most likely be needed. The problem with them is mounting, so we've developed this bracket to weld up to your chassis. The mounts are made for PWR heat exchangers, radiused for 1-1/2" tubing and dimple died for added strength.

Part Number	Description
PRM-HEBRACKET	Heat Exchanger Mount for PWR Heat Exchangers



PWR Radiator Mount

This universal radiator mount allows you to securely mount a radiator of any width and height by simply welding the mounting brackets into place. The kit features molded urethane pads to help isolate the radiator from chassis flex and features a removable bracket for easy radiator installation and removal.

This kit is for use with any standard two row or 3-1/2" thick radiator. Hardware is not included.

Part Number	Description
PRM-RMKIT	Universal PWR Radiator Mount w/ Rubber Kit
PRM-RMRUBKIT	Urethane Kit Only, Three Piece



Spare Tire Mounts



ORI Tire Mounts
ORI-367000 - Angle Mount
ORI-356000 - Flat Mount
ORI-994440 - Urethane Only



Total Chaos Chromoly Tire Mounts
TCF-40005 - 5 Lug Toyota Mount
TCF-40006 - 6 Lug Toyota Mount
TCF-40007 - VW Lug Mount

Pedal Mounts



CNC Swing Clutch & Brake
CNC-1224 - Swing Mount
CNC-1225 - Reverse Swing Mount



Sand Car Floor Clutch & Brake
SUS-04327



CNC Floor Individual
SUS-04330 - Brake Assembly Mount
SUS-04331 - Clutch Pedal Mount

Shifter & Turn Handle Mounts



VW Shifter Boxes
SAC-601901 - SACO Racing Shifter Box
MRB-3158 - EMPI Shifter Box



Fortin Shifter Mount
PRM-05321



CNC Turn Handle Bracket
PRM-45021

Miscellaneous Mounts & Brackets



Spun Aluminum Fuel Tank Mounts
SUS-04128A - 8" Dia. Tank Mount, Pair
SUS-04128 - 10" Dia. Tank Mount, Pair



Channel Bracket
TAB-AA041A - 2" Long w/ 3/8" Hole
TAB-AA042A - 3" Long w/ Two 3/8" Holes
TAB-AA03A - 4-3/4" Long w/ Two 3/8" Holes



UMP Super Filter Bracket, Pair
PRM-UMPBRKT



Strut Bracket w/ 1/2" Hole
BWS-125 - 2.0" Shocks Only



Ignition Coil Mounts
SUS-04126 - Dual Coil Mount
SUS-04125 - Single Coil Mount



5/8" Brake Line Brackets, Pair
BWS-034625 - Straight Bracket
SUS-04114B - Radius Bracket



Weld-On Caliper Brackets
TAB-AA055A - 3-1/2" Center on Center
Tab-AA050A - 5-1/4" Center on Center



Tie Down Bracket
PRM-06351

Weldable Tabs

Flat Tabs

Flat Tabs

Part Number	Hole Dia.	Stand Off	Thickness	Sold As
BWS-114187	1/2"	1-1/4"	3/16"	Pair
BWS-114	1/2"	1-1/4"	1/4"	Pair

Chromoly Flat Tabs

Part Number	Hole Dia.	Stand Off	Thickness	Sold As
PRM-09454	1/4"	1"	1/8"	Pair
PRM-09453	3/8"	1"	1/8"	Pair

Notched Flat Tabs

Part Number	Hole Dia.	Stand Off	Thickness	Sold As
TAB-AA023C1/4	1/4"	1"	.090"	4 Pack
BWS-083375F	3/8"	1"	.090"	4 Pack

Rounded Flat Tabs

Part Number	Hole Dia.	Stand Off	Thickness	Sold As
BWS-118500	1/2"	1-1/4"	3/16"	Pair

Flat Trapezoid Tabs

Part Number	Hole Dia.	Stand Off	Thickness	Sold As
TAB-AA043C1/4	1/4"	7/8"	.090"	Pair
TAB-AA043C3/8	3/8"	7/8"	.090"	Pair
TAB-AA043C1/2	1/2"	7/8"	.090"	Pair
TAB-BWS023	1/2"	5/8"	3/16"	Pair
DEE-5567	1/2"	7/8"	3/16"	4 Pack

Wing Offset Tabs

Part Number	Hole Dia.	Stand Off	Thickness	Sold As
PRM-04108	1/2"	1"	3/16"	Pair

Radius Tabs

Radius Tabs

Part Number	Hole Dia.	Stand Off	Thickness	Tube Dia.	Sold As
TAB-AA228A	1/4"	5/8"	1/8"	1"	Pair
TAB-AA112A	1/4"	1"	1/8"	1-1/4"	Pair
BWS-120	3/8"	5/8"	1/8"	1"	Pair
BWS-030	3/8"	1"	1/8"	1-1/4"	Pair
BWS-113375	3/8"	1-1/4"	1/8"	1-1/2"	Pair
BWS-112500	1/2"	1"	3/16"	1-1/2"	Pair
BWS-113	1/2"	1-1/4"	1/8"	1-1/2"	Pair

Chromoly Radius Tabs

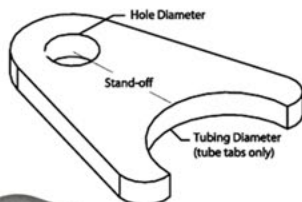
Part Number	Hole Dia.	Stand Off	Thickness	Tube Dia.	Sold As
PRM-09452	3/8"	1"	1/8"	1-1/2"	Single

Chassis Offset Radius Tabs

Part Number	Hole Dia.	Stand Off	Thickness	Tube Dia.	Sold As
BWS-019375	3/8"	1-3/4"	3/16"	1-3/4"	Pair
BWS-019500	1/2"	1-3/4"	3/16"	1-3/4"	Pair

Chromoly Bushing Radius Tabs

Part Number	Hole Dia.	Stand Off	Thickness	Tube	Sold As
PRM-SPT31612CM	1/2"	1"	3/16"	1-1/2"	Single
PRM-PT31612CM	1/2"	1-3/8"	3/16"	1-3/4"	Single
PRM-PT31612CM12	1/2"	1-1/4"	3/16"	1-1/2"	Single
PRM-PT31658CM	5/8"	1-3/8"	3/16"	1-3/4"	Single
PRM-PT31658CM12	5/8"	1-1/4"	3/16"	1-1/2"	Single
PRM-PT1458CM	5/8"	1-3/8"	1/4"	1-3/4"	Single
PRM-PT1458CM12	5/8"	1-1/4"	1/4"	1-1/2"	Single
PRM-PT1434CM	3/4"	1-3/8"	1/4"	1-3/4"	Single
PRM-PT14150CM	1"	1-1/4"	1/4"	1-1/2"	Single
PRM-PT14175CM	1"	1-3/8"	1/4"	1-3/4"	Single



Flat Tab



Notched Tab



Rounded Tab



Trapezoid Tab



Wing Offset Tab



Standard & Chromoly Radius Tab



Offset Radius Tab

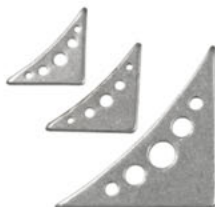


Bushing Radius Tab

Gussets



90° Radius Gussets, Pair
BWS-123187 - 3" Leg, 3/16" Thick



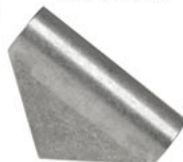
90° Corner Gussets, Pair
BWS-020 - 1-1/2" Leg, 1/8" Thick
BWS-021 - 1-3/4" Leg, 1/8" Thick
BWS-023 - 3" Leg, 3/16" Thick



90° Roll Bar Gussets, 4 Pack
DEE-5568 - 3" Leg, 1/8" Thick



90° 1/2" Hole Gussets, Pair
TAB-AA021A - 1-3/4" Leg, 1/8" Thick



90° Form Frame Gusset, Pair
BWS-100 - 3" Leg, 4/5" Thick, 1-1/2" Tube

Formed Tabs

Formed Flat Tabs

Part Number	Hole Dia.	Stand Off	Thickness	Sold As
TAB-AA043A	1/4"	7/8"	.090"	4 Pack
BWS-110375	3/8"	7/8"	.090"	4 Pack
BWS-110	1/2"	7/8"	.090"	4 Pack



Formed Flat Tab

Formed Radius Tabs

Part Number	Hole Dia.	Stand Off	Thickness	Sold As
BWS-083	1/4"	1"	.090"	4 Pack
BWS-083375	3/8"	1"	.090"	4 Pack



Formed Radius Tab

HD Formed Radius Tabs

Part Number	Hole Dia.	Stand Off	Thickness	Sold As
BWS-073250	1/4"	1"	1/8"	Pair
BWS-073375	3/8"	1"	1/8"	Pair
BWS-073437	7/16"	1"	1/8"	Pair
BWS-073500	1/2"	1"	1/8"	Pair



HD & Chromoly
Formed Radius Tab

Formed Chromoly Radius Tabs

Part Number	Hole Dia.	Stand Off	Thickness	Sold As
PRM-09455	3/8"	3/4"	1/8"	Pair



Permanent Nut
Radius Tab

Permanent Nut Radius Tabs

Part Number	Hole Dia.	Stand Off	Thickness	Sold As
PRM-11651	5/16"	3/4"	1/8"	Single

Plate Nut Radius Tabs

Part Number	Hole Dia.	Stand Off	Thickness	Sold As
PRM-094515	5/16"	3/4"	1/8"	Single
PRM-094516	3/8"	3/4"	1/8"	Single



Plate Nut Radius Tab

Floater Nut Radius Tabs

Part Number	Hole Dia.	Stand Off	Thickness	Sold As
PRM-094515F	5/16"	3/4"	1/8"	Single
PRM-138715F	5/16"	7/8"	1/8"	Single
PRM-094516F	3/8"	3/4"	1/8"	Single



Floater Nut
Radius Tab

Formed Channel Tabs

Part Number	Hole Dia.	Stand Off	Thickness	Sold As
TAB-AA058C	Blank	1"	1/8"	Pair
BWS-080	3/8"	1"	1/8"	Pair
TAB-AA058A	1/2" Slot	1"	1/8"	Pair



Formed Channel Tab w/ Slot

Shock Parts & Tools

Off-Road Performance Shocks

KARTEK warehouses performance off road shocks from Fox Shox, King, Racerunner, and Bilstein. Our inventory includes a wide variety of non-coil overs, coil overs, by-pass, bump stops, air shocks, and OE replacement shocks for trucks, SUVs & UTVs. Replacement parts for damaged shocks are also available. Sizes are available in 2.0", 2.5", 3.0", 3.5".

Please give us a call for more information on available sizes and what best fits your application.



Coils, Leafs, Torsion Springs & Bars

Along with our extensive line of shocks, we stock springs from Eibach, King, and Deaver. We stock coils for coil over shocks, and leaf springs for trucks. For buggies running VW suspensions, we also sell front beam leaf springs and rear torsion bars.

Please give us a call for more information on available sizes and what best fits your specific application.

Billet Chromoly Shock Mounts

These shock mounts from Camburg are made from 1-1/2" 4130 chromoly steel and use a 1/2" bolt. Available with single and dual tapers.



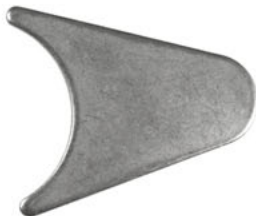
Part Number
CAM-040013
CAM-040068

Description
Camburg Taper Billet Shock Mounts, Pair
Camburg Dual Taper Billet Shock Mounts, Pair

Shock Mount Tabs



Shock Tab w/ 1/2" Hole
BWS-116, pair



Heavy Duty Rear End Tab
BWS-111, 4 pack

Limiting Strap Hardware

Limiting straps are ideal for any off road application since they are vital in preventing damage to your suspension and drivetrain components. Without limiting straps, your shocks act as stops at maximum droop which can cause damage from your vehicle's unsprung weight. Limiting straps also prevent damage to your CV's by limiting the amount of maximum angle on your axles.

The limit straps we carry are triple-ply so only 1" of stretch is allowed for every 12" of strap. We carry straps in lengths from 8" to 38" and custom lengths can be special ordered.

Part Number
PRM-CLV123
TCF-69619

Description
Adjustable Limiting Strap Clevis
Limiting Strap Clevis Mount, Weld-on



Hydraulic/Air Bumpstop Mounts



Pinch Bumpstop Mount
CAM-040027 - 2" Two Bolt Pinch Mount



King Bumpstop Mount
KNG-BSM200 - 2" Bumpstop Mount
KNG-BSM250 - 2-1/2" Bumpstop Mount
KNG-BSM250M - 2-1/2" Bumpstop Mini-Mount

Shock Reservoir Mounts

Part Number	Description
BWS-099200	2.0" Weld-on Steel Mounts, Pair
BWS-099250	2.5" Weld-on Steel Mounts, Pair



2.0" Urethane Mounts, Pair
DEE-191718BL - 1.5" Tubing, Black



2.5" Urethane Mounts, Pair
DEE-191719 - 1-1/2" Tubing, Red
DEE-191719BL - 1-1/2" Tubing, Black



Universal Rubber Mount
MRP-100

Nitrogen Shock Fill Kit

We stock this high quality pressure regulator to save you time and money. Hose length is 6 ft. long. The bottle pressure gauge measures from 0 to 4000 psi. The adjustable regulator measures from 0 to 1000 psi. A bleed valve is installed on the shock side for easy deflation.

Part Number	Description
KTK-FILLKIT	Nitrogen Shock Fill Kit
KTK-FILLKITWB	Nitrogen Shock Fill Kit w/ Bottle



Schrader Valve Pressure Gauges



Fox Shox 300 psi Pressure Gauge
FOX-80202002A



ProAm 400 psi Liquid Filled Pressure Gauge
PRM-80202002A

Shock Parts & Tools

Nitrogen Safety Fill Valve

The replacement fill valve needle is used in conjunction with a nitrogen bottle and shock fill kit for quick and easy refills of shock absorbers and bump stops. Unlike using a schrader valve which requires a threaded T handle to fill a shock, this setup uses a Fox air valve, which only requires the user to simply press the needle in the air valve and hold in place in order to fill a shock.

Part Number	Description
FOX-80201000A	Nitrogen Safety Needle Fill Valve



Spanner Wrenches



Racerunner
PRM-52104-101 - 2.0"
PRM-56104-101 - 2.5"



Bilstein & Fox
PRM-191014 - 2.0"
PRM-191015 - 2.5"



Fox
PRM-07098 - 2.5" Upper
PRM-07099 - 2.5" Lower



King Aluminum
KNG-2BSW - 2"
KNG-250BSW - 2.5"



King T-Handle
KNG-2/250THSW - 2" & 2.5"
KNG-3THSW - 3"

Spindles & Uprights

Combo & King Kong Spindle Snouts

Combo spindle spuds are perfect for rear engine cars with a beam or a-arm front suspension. Every spud is machined from a solid bar of 4130 chromoly steel to provide superior strength compared to stock cast spindles. The King Kong spud is a stronger version while retaining a lightweight setup.

Part Number	Description
PRM-4130SPUDR	Right Hand Combo Spud
PRM-4130SPUDL	Left Hand Combo Spud
PRM-4130KKSPUDR	Right Hand King Kong Spud
PRM-4130KKSPUDL	Left Hand King Kong Spud



Combo & King Kong Stepped Spouts

The stepped version of the Combo & King Kong spuds have been stepped machined on the spud's base. This step allows you to accurately weld the spud to a backing plate (part number KTK-BPF for both Combo & King Kong spuds) which allows the spud to be used for your own upright design.

Part Number	Description
PRM-4130SPUDRS	Right Hand Stepped Combo Spud
PRM-4130SPUDLS	Left Hand Stepped Combo Spud
PRM-4130KKSPUDRS	Right Hand Stepped King Kong Spud
PRM-4130KKSPUDLS	Left Hand Stepped King Kong Spud



2" Weld-On Hollow Spindle Snouts

2" weld-on hollow spindle snouts are traditional snouts that are CNC machined from 4130 chromoly steel and step machined to fit a variety of different caliper brackets to suit your need.

Part Number	Description
PRM-2INWHSRKIT	Right Hand Weld-On 2" Hollow Snout w/ Nut
PRM-2INWHSCLKIT	Left Hand Weld-On 2" Hollow Snout w/ Nut



2" & 2.5" Bolt-On Hollow Snouts

The 2" & 2.5" bolt-on hollow spindle snouts were designed for use with ProAm's line of full race hubs and uprights. The bolt-on design allows for interchangeability between 2" and 2.5" snouts while providing an exact alignment. They can also use a backing plate (PRM-2HSBPWNB) which allows you to design your own upright.

Part Number	Description
PRM-2INBHSRHDKIT	Right Hand Bolt-On 2" Hollow Snout w/ Nut
PRM-2INBHSCLKIT	Left Hand Bolt-On 2" Hollow Snout w/ Nut
PRM-TT2500SR	Right Hand 2.5" Front Spindle Snout
PRM-TT2500SL	Left Hand 2.5" Front Spindle Snout



2.5" Rear Spindle Snouts

These heavy duty spindle snouts are designed to be used on your rear axle housing. They use the same materials as the front 2.5" snouts and are available with either a short 3" and a long 4-1/2" engagement area to meet your needs.

Part Number	Description
PRM-LRTS2500R	Right Hand Long 2.5" Rear Snout
PRM-LRTS2500L	Left Hand Long 2.5" Rear Snout
PRM-RTS2500R	Right Hand Short 2.5" Rear Snout
PRM-RTS2500L	Left Hand Short 2.5" Rear Snout



2" Ford Front Spindle Snouts

The 2" Ford spindle snouts are design to allow Ford trucks to use any brake hubs that are designed for 2" snouts with Ford's stock I-Beam front suspension. The snouts feature a back pin that presses into the stock location of an I-Beam spindle for a more accurate alignment and a perfect weld. The snout also includes a relief that presses over the factory oil seal of the Ford spindle. Like all of our snouts, the Ford snout is made from 4130 chromoly.

Part Number	Description
PRM-2INRNGRSL	Right Hand 83-97 2WD Ranger Snout
PRM-2INRNGRSL	Left Hand 83-97 2WD Ranger Snout
PRM-2INF150SR	Right Hand 88-96 2WD F-150 Snout
PRM-2INF150SL	Left Hand 88-96 2WD F-150 Snout



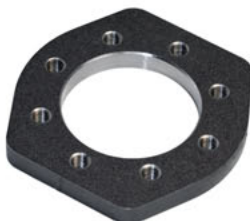
Backing Plates & Hardware



Backing Plate for
Stepped Combo/KK Snouts
KTK-BPF



Hollow Snout Hardware
PRM-2INBHSBKIT - 2"
PPRM-250INBHSBKIT - 2.5"



Backing Plate for
2" & 2.5" Bolt-On Snouts
PRM-2HSBPWNB

Spindles & Uprights

Spindle Nuts



Combo & King Kong Spindle Nuts
PRM-6238 - Aluminum, Pair
PRM-6238CM - Chromoly, Pair
FEP-661CM - Washer for 6238CM



2" Spindle Nuts
PRM-1448CR - Right Weld-On Snout
PRM-1448CL - Left Weld-On Snout
PRM-1448CRB - Right Bolt-On Snout
PRM-1448CLB - Left Bolt-On Snout



2.5" Spindle Nuts
PRM-TT2500SNR - Right Hand Nut
PRM-TT2500SNL - Left Hand Nut
PRM-TT2500SNP - Spare Washer

Econo Upright Kits

The Econo upright kit offers an affordable alternative to uprights that use a billet clevis by using a seamless chromoly tube with a 1/4" wall thickness. Instead of using a bolt on snout, econo uprights use a 2" weld-on snout with a caliper flange as a backing plate, which is slotted for locking into the clevis for a precision fit.

The Econo uprights include a billet chromoly kingpin with a laser cut gusset kit to provide the durability needed to handle up to 2000 lbs. and 33" tall tires.

Econo uprights are available in 10°, 12°, 14° and 16° inclinations with either 9-1/4", 10-1/2" and 11-1/2" kingpin lengths. Bolts, nuts, spacers and uniballs are all sold separately.



Prerunner Upright Kits

The Prerunner uprights provide for an "off-the-shelf" kit with standardized dimensions. This allows fabricators to cheaply and easily manufacture replacements and help reproduce suspension designs, while still providing a design that can be used with a large variety of different hub assemblies and brake calipers.

These Prerunner uprights use a 5.4" billet chromoly clevis and 2" bolt on snouts which can be used for vehicles up to 3500 lbs. with 35" tall tires.

Prerunner uprights are available in 10°, 12° and 14° inclinations and in 9-1/4", 10-1/2" and 11-1/2" kingpin lengths. These are perfect for Class 10 cars, large prerunners and buggies with a-arm suspensions. The kit does not include bolts, nuts, spacers or uniballs.



Full Race Upright Kits

The full race upright kits offer the next level in strength and safety, by utilizing a 5.9" clevis, and by using a double bolt king pin which uses two bolts instead of one to reduce the stress on the bolts to prevent shearing. This design also offers a larger clevis that not only provides for extra reinforcement, but is capable of using both 2" and 2-1/2" bolt on spindle snouts. With the ability to use two different size snouts, the upright can use a larger variety of hubs and can be used in both Class 1 and Trophy Truck classes.

We offer standardized kits with 14° and 16° inclinations with 12", 13" or 14" lengths. 10° and 12° kits are also available as special order.

The hardware kit includes two 3/4" grade 8 bolts, nylock nuts and kingpin spacers. Uniballs and hi-misalignment spacers are sold separately.



Trophy Truck Upright Kits

Trophy Truck upright kits build upon the full race kits by taking the same high quality chromoly steel and integrated features and refines them for the heaviest and most powerful desert vehicles. The result is this upright design that's perfect for the Trophy Truck class and for vehicles that weight up to 7000 lbs. and use as large as 39" tall tires.

These kits use a larger 6.4" clevis and 2.5" bolt-on snouts. It also uses a double bolt king pin and can use ProAm's Trophy Truck and 30 Series hub assemblies.

We offer kits with 14° and 16° inclinations. The hardware kit includes two 3/4" grade 8 bolts, nylock nuts and kingpin spacers. Uniballs and hi-misalignment spacers are sold separately.



2wd Short Course Upright Kits

These uprights are designed to be lighter but retain the high degree of strength that our other uprights have through it's one piece snout and clevis design. These kits are made from 4130 chromoly and feature laser cut gussets, hi-misalignment spacers and a dual bolt kingpin. Unique to these upright is it's lower uniball cage which provides the same level of durability as our billet clevis uprights.

These uprights are designed to use ProAm's front hubs and four piston race calipers. They use the standard 2.5" Trophy Truck spindle nuts, bearings and races.

These upright kits include the kingpin, lower uniball cage, 2.5" snout, gusset kit, two spindle bolts and two 3/4" nylock nuts. Rear snouts are also available.



Short Course "Lite" Style Upright Kits

These front upright kits offer to short course racers a pre-fabbed upright for the exciting Lite truck classes. By combining the snout and clevis, weight was reduced and strength was retained by using less material and hardware.

These uprights are designed to use ProAm's front hubs, four piston calipers and use the standard 2.5" Trophy Truck spindle nuts, bearings and races.

These upright kits have a 12° inclination and include the kingpin, 2.5" snout, gusset kit, spindle bolt and 3/4" nylock nut. Rear snouts are also available.



I-Beam Clevis

The I-Beam clevis is an alternative to using the Ford 2" weld-on snouts and provide for greater customization and for a stronger alternative to the stock setup. By using a billet 5.4" clevis, this setup allows for the use of 2" bolt on spindle snouts and prerunner hub assemblies without having to use weld on caliper brackets.

Since this design does not modify the I-beam, the clevis can slide over the stock knuckle of the I-Beam and use the stock threaded caps which screw into the bosses for an easy installation.



Buggy Suspension

Beam Spindles

Woods Spindles (sold as pairs)

Part Number	Description
WWW-COSPKIT	Combo Spindles
WWW-COSPKIT5/8	Combo Spindle w/ 5/8" Hole
WWW-COSPKIT2D	2" Combo Spindle
WWW-COSPKIT2D5/8	2" Combo Spindle w/ 5/8" Hole

Foddrill Spindles (sold individually)

Part Number	Description
FOD-101D	Combo Spindle
FOD-10158D	Combo Spindle w/ 5/8" Hole
FOD-101LD113D	Combo Spindle w/ Double Shear
FOD-103D	2" Combo Spindle
FOD-10358D	2" Combo Spindle w/ 5/8" Hole
FOD-103D113D	2" Combo Spindle w/ Double Shear
FOD-109D	2" King Kong Spindle
FOD-109D113D	2" King Kong Spindle w/ Double Shear
FOD-111D	2" King Kong Drop Spindle
FOD-111D113D	2" King Kong Drop Spindle w/ Double Shear
FOD-130LD	King Kong/Combo Spindle
FOD-130LD113D	King Kong/Combo Spindle w/ Double Shear
FOD-132LD	2" King Kong/Combo Spindle
FOD-13258LD	2" King Kong/Combo Spindle w/ 5/8" Hole
FOD-132LD113D	2" King Kong/Combo Spindle w/ Double Shear
FOD-1257D	7" Jimco Style Spindle, pair
FOD-12512D	12" Jimco Style Spindle, pair



Woods 2" Combo Spindle w/ 5/8" Hole



Foddrill King Kong Spindle w/ Double Shear

A-Arm Spindles

These TIG welded spindles with steering arms are available in Combo, King Kong, or 2" hollow snout sizes. Made from 4130 chromoly steel plate, Combo and King Kong spindles have a thick backing plate with a 3 bolt pattern for the caliper bracket, and 2" hollow spindles have a fixed caliper bracket.

Part Number	Description
PRM-AALSP	Combo A-Arm Spindle, Left
PRM-AARSP	Combo A-Arm Spindle, Right
PRM-KKAALSP	King Kong A-Arm Spindle, Left
PRM-KKAARSP	King Kong A-Arm Spindle, Right
PRM-2INAALSP	2" Hollow Snout A-Arm Spindle, Left
PRM-2INAARSP	2" Hollow Snout A-Arm Spindle, Right



2" Hollow Snout A-Arm Spindle

Beam Spindle Hardware

KARTEK stocks and sells all of the necessary hardware to assemble and setup your beam car's front suspension. We carry all parts for Combo & King Kong spindles and arms such as link pins, kingpins, bushings, bearings, shims, snap rings, and zerk fittings.

All hardware is sold separately from all spindles and trailing arms.



Beam Trailing Arms

Woods Beam Trailing Arms (sold as sets)

Part Number	Description
WWW-1600ARMS	1600 Arm Kit
WWW-1600ARMS7/8	1600 Arm Kit w/ 7/8" Pin
WWW-1250ARMS	1-1/4" Longer Arm Kit
WWW-2250ARMS	2-1/4" Longer Arm Kit
WWW-2250ARMS7/8	2-1/4" Longer Arm Kit w/ 7/8" Pin
WWW-2250CORACE	2-1/4" Longer Coil Over Arm Kit w/ 7/8" Pin
WWW-2250COARMS	2-1/4" Longer Coil Over Arm Kit
WWW-2250SCARMS	2-1/4" Longer Sand Arm Kit w/ Torsion
WWW-3000COARMS	3" Longer Coil Over Arm Kit
WWW-4000ARMS	4" Longer Coil Over Arm Kit
WWW-4000ARMSHD	4" HD Longer Coil Over Arm Kit w/ 1.750" Pivot



Woods 4" Longer Coil Over Arms

Foddrill Beam Trailing Arms (sold as sets or individually)

Part Number	Description
FOD-201D	1600 Arm Kit
FOD-202D	1600 Arm Kit w/ 7/8" Pin, for 10" Shock
FOD-202DLE	Lothringer Style 1600 Arm Kit
FOD-202DN	1600 Narrow Arm Kit w/ Big Pin
FOD-220D	1600 Arm Kit w/ Double Sheer, for 12" Shock
FOD-214D	2-1/2" Longer Arm Kit w/ Torsion
FOD-217D	2-1/2" Longer Coil Over Arm Kit
FOD-230D	2-1/2" Longer Coil Over Arm Kit w/ 7/8" Pin
FOD-256D	2-1/2" Longer Sand Arm Kit w/ 5/8" Pin
FOD-257D	2-1/2" Longer Arm Kit w/ Torsion
FOD-228D	4" Longer Coil Over Arm Kit
FOD-260D	4" Longer Sand Arm Kit
FOD-258D	5" Longer Sand Arm Kit
FOD-278D	4" Coil Over w/ 1.750" Pivot (Class 5 & 12)



Foddrill 2-1/2" Longer Coil Over Arms

Custom Length Beam Thru Rods

When converting a VW beam front suspension from using leaf springs to coil over shocks, thru rods are used in place of the leaf springs to keep the front trailing arms in place. Here at KARTEK, you can have a chromoly thru rod built to length for your buggy. All of the hardware for the thru rods are included.



Beam Bushings

We sell a variety of beam bushings kits that are designed to help eliminate excessive front-end play, impaired handling and absorb the shocks which can damage trailing arms. The flanged outer ends eliminate the need for stock dust seals. All bushing kits are sold as sets of 4. Stock bushing kits are also available. Call for available sizes.



Beam Bushing Reamer

Beam bushings should be reamed to help prevent binding which is common with VW beam front ends. The reamer tool deburs the edges, matching all bushings to the correct inside diameter and ensure the bushings are perfectly round.

Part Number	Description
HAR-REAMER1	1-11/32" to 1-1/2" Reamer
HAR-REAMER2	1-1/2" to 1-13/16" Reamer
HAR-REAMER3	1-1/16" to 1-3/16" Reamer



Buggy Suspension

VW Front Beams

Standard Beams

Part Number	Description
PRM-010000R	1600 Beam w/ Adjusters
PRM-010000RPB	1600 Parallel Beam w/ King Kong Adjusters
PRM-0100516R	5/1600 Beam w/ King Kong Adjusters
SUS-01000	Stock Width Beam w/ Adjusters
SUS-01000NA	Stock Width Beam
SUS-01005	5" Wider Beam w/ Adjusters
SUS-01005NA	5" Wider Beam
SUS-01006	6" Wider Beam w/ Adjusters
SUS-01006NA	6" Wider Beam
SUS-01008	8" Wider Beam w/ Adjusters
SUS-01008NA	8" Wider Beam
SUS-01009NA	9" Wider Beam



Standard Beam
w/ Adjusters

Heavy Duty Beams (Class 5 & 12)

Part Number	Description
PRM-PB3804HD	4" Wider HD Beam
PRM-PB4006HD	6" Wider HD Beam
PRM-PB4208HD	8" Wider HD Beam
PRM-PB4410HD	10" Wider HD Beam
PRM-PB4612HD	12" Wider HD Beam
PRM-PB4814HD	14" Wider HD Beam



Heavy Duty Beam
2.250" x .120" Top Tube
2.500" x .250" Bottom Tube

Tower Beams

Part Number	Description
SUS-01080	Stock Width Beam w/ 8" Tower w/ Adjusters
SUS-01085	5" Wider Beam w/ 8" Tower
SUS-01086	6" Wider Beam w/ 8" Tower w/ Adjusters
SUS-01100	Stock Width Beam w/ 10" Tower
SUS-01104CO	4" Wider Coil Over Beam w/ 10" Tower
SUS-01106	6" Wider Beam w/ 10" Tower
SUS-01106CO	6" Wider Coil Over Beam w/ 10" Tower
SUS-01108	8" Wider Beam w/ 10" Tower



Tower Beam
w/ Adjusters

Class 9 VW Ball Joint Beam Clamps

A must for all Class 9 VW ball joint cars. The pinch bolt design prevents beam movement with these trick clamps. A KARTEK exclusive that are sold as a set of four with grade 8 hardware.

Part Number	Description
KTK-04100	Class 9 VW Ball Joint Front Beam Clamp Set



Beam Clamps



VW Beam Clamps
DEE-5504001 - 4 Pack
For 2" to 2-1/16" Tubing, 3/16" Thick



Weld-On Frame Head Mounts
SUS-02148 - VW Link Pin Spacing
SUS-02149 - VW Ball Joint Spacing

Beam End Plates

These beam end plates allow you to have a pre-fabbed plate for easy repair or for fabricating your own front beam.

Part Number	Description
SUS-BEP	Standard Front Beam End Plate, no Bump Stop
SUS-010000ACM	Chromoly Front Beam End Plate, w/ Bump Stop
SUS-010000BCM	Box-In Plate for SUS-010000ACM, Required
SUS-010000CCM	Box-In Plate for SUS-010000ACM, Required

End Plate w/ Bump Stop



Heavy Duty Grub Screws

These front grub screws have been heat treated to the same standard as the German OEM grub screws, but feature a smaller 3/16" allen design. This design allows the grub screws to be stronger and less likely to crack than the current brittle aftermarket grub screws on the market. Nuts are included.

Part Number	Description
KTK-411151	Heavy Duty Grub Screws for Leaf Arm Adjusters w/ Nut, each



Lower Link Pin Shock Extension Kit

This kit extends the shock mount on a link pin trailing arm and features a 1-3/4" shock boss. Sold individually.

Part Number	Description
SUS-02135	Lower Link Pin Shock Extension Kit



Leaf Spring Adjusters

These adjusters are welded into the middle of a beam and are used to adjust the tension of the leaf springs. Adjuster kits without tubes along with individual disk & spacers are also available.

Part Number	Description
SAW-6320	Sway-A-Way Ball Joint Front Beam Adjuster
SAW-6331	Sway-A-Way King Kong 1.745" Disc Front Beam Adjuster



Link Pin Teardrop Gussets

These gussets are designed to be welded to the front trailing arms to strengthen the arms. They are 3/16" thick. Sold in a set of four.

Part Number	Description
SUS-02105	Link Pin Front Trailing Arm Teardrop Gussets



Link Pin Carrier Gussets

These 1/4" thick gussets reinforce the link pin carriers. Sold in pairs.

Part Number	Description
SUS-02125	Link Pin Carrier Gusset Set



Buggy Suspension

Spindle Arm Gussets

These gussets are used to reinforce the spindle arms. Sold in pairs.

Part Number	Description
SUS-02128	Link Pin Spindle Arm Gussets
SUS-02129	Ball Joint Spindle Arm Gussets



Link Pin Spindle Arm Gussets

Hook & Rod Kit

These gussets are designed to be welded to the front trailing arms of either link pin or ball joint front ends and help prevent the front suspension from overtraveling. The kit includes rods which are installed through the shock tower for additional strength. The hook stops can be order alone.

Part Number	Description
SUS-02100	Hook & Rod Kit
SUS-02101	Hook Stops Only



Rear 1600 Torsion Housings

Part Number	Description
PRM-STOCKRTH	1600 Torsion Housing w/ Pivots
PRM-1600RTH7020	1600 Torsion Housing w/ King Kong Adjuster



1600 Torsion Housing
w/ King Kong Adjuster

Rear Torsion Adjusters

These adjusters are welded into the middle of a torsion housing and are used to adjust the tension of the torsion bars. Fingers & set screws are available separately.

Part Number	Description
SAW-7000	Sway-A-Way Standard Torsion Adjuster
SAW-7001	Sway-A-Way Standard Finger Only, each
SAW-7015	Sway-A-Way Wide Torsion Adjuster
SAW-7020	Sway-A-Way King Kong Torsion Adjuster
SAW-7023	Sway-A-Way King Kong Finger Only, each
SAW-7011	Sway-A-Way Bolt Kit for 7000/7020



Standard Torsion Adjuster

IRS Pivots

IRS Pivots are available in 10°, 12°, and 13° variations. The race versions are fabricated from chromoly steel. All pivots are 3/16" thick.

Part Number	Description
SUS-04142	10° IRS Race Pivot
SUS-04145	12° IRS Race Pivots
SUS-04140	Standard 13° IRS Pivots, Uses Stock VW Pivot Bolt
SUS-04143	Standard 13° IRS Race Pivots
HAR-45	IRS Stock Pivot Bolt & Washers
HAR-45R	IRS 7/8" Race Pivot Bolt & Washers



Chromoly 10° Race Pivot

IRS Pivot Bolt Stops

Pivot bolt stops are used to prevent the IRS pivot bolt from loosening and backing out. The stop are welded on to your housing and are able to swing into place against the pivot bolt head.

Part Number	Description
SUS-04148	Pivot Bolt Stops, Pair



Torsion Housing End Plates

End plates allow for maximum travel without having the spring plates hitting any bolts. Sold in pairs.

Part Number	Description
SUS-04138MS	Standard End Plates
SUS-04138CM	Standard Chromoly End Plates
SUS-04137	Chenoweth End Plates



Torsion Housing End Caps

Part Number	Description
MRP-9545	Standard Max Torsion End Caps, Pair
MRP-9545CNW	Chenoweth Max Torsion End Caps, Pair



Spring Plate Collars

Part Number	Description
SAW-5409	3.500" Long Spring Plate Collar
SAW-5406	5.910" Long Spring Plate Collar
SAW-5407	7.810" Long Spring Plate Collar



5.910" Spring Plate Collar

Spring Plates

Swing Axle Spring Plates

Part Number	Description
SAW-4101	2.935" Collar - Standard, use w/ 21-3/4" Bars
SAW-4102	5.910" Collar - Standard, use w/ 24-11/16" Bars
SAW-4103	7.810" Collar - Standard, use w/ 26-9/16" Bars
SAW-4501	2.935" Collar - Chromoly, use w/ 21-3/4" Bars
SAW-4502	5.910" Collar - Chromoly, use w/ 24-11/16" Bars
SAW-4503	7.810" Collar - Chromoly, use w/ 26-9/16" Bars



IRS Spring Plates

Part Number	Description
SAW-4201	2.935" Collar - IRS Spring Plate, use with 21-3/4" Bars
SAW-4202	5.910" Collar - IRS Spring Plate, use with 24-11/16" Bars
SAW-4203	7.810" Collar - IRS Spring Plate, use with 26-9/16" Bars

VW Axle Spacers

These spacers are used to replace the stock spacers in swing axle & IRS applications

Part Number	Description
KTK-2202	IRS Spacer Set
KTK-2212	IRS Inner Spacer
KTK-2222	IRS Outer Spacer
SAW-2223	IRS Middle Spacer
SAW-2201	Swing Axle Spacer Set



Buggy Suspension Shock Mounts



Swing Axle Shock Mounts
SUS-05104



Triple Shock Mounts
SUS-05101
Use w/ SUS-05110 Trailing Arm Kit

IRS Trailing Arm Gusset Kit

This gusset kit for stock VW trailing arms is made from 10 gauge steel plates for additional strength. Sold as a kit for a pair of arms.

Part Number	Description
SUS-05110	IRS Trailing Arm Gusset Box Kit



Rear Trailing Arms

Rear trailing arms are available as either mild or chromoly steel and are available for a variety of different bearing housings. Some feature shock mounts and caliper brackets depending on the type of hub used or intended application. Call our sales staff for more information.

Please specify what type of bearing or wheel hub you are using when ordering.

1600 Rear Trailing Arms (sold as pairs)

Part Number	Description
SUS-05136	1/2-1600 VW Bearing Trailing Arms
SUS-05138	1/2-1600 Micro Stub Trailing Arm
SUS-05137	5-1600 Micro Stub Trailing Arms



1600 Class VW
Bearing Trailing Arm



Boxed Chromoly
Trailing Arms

Boxed Rear Trailing Arms

Part Number	Description
SUS-05163	3" x 3" VW Bearing Trailing Arm
SUS-05163CM	3" x 3" VW Bearing Chromoly Trailing Arms
SUS-05163CMMS	3" x 3" Micro Stub Chromoly Trailing Arms
SUS-05164	3" x 4" Micro Stub Trailing Arms
SUS-05164CMMS	3" x 4" Micro Stub Chromoly Trailing Arms
SUS-05165MS	3" x 5" Micro Stub Trailing Arms
SUS-05165CMMS	3" x 5" Micro Stub Chromoly Trailing Arms



930 & 934 Micro Stub
Trailing Arms



930 & 934 Midboard
Trailing Arms

Kartek Wheel Hub Rear Trailing Arms

Part Number	Description
PRM-RTA930	930 Micro Stub Chromoly Trailing Arms
PRM-RTA934	934 Micro Stub Chromoly Trailing Arms
PRM-RTA934MB	930/934 Midboard Chromoly Trailing Arms
PRM-RTA934F	934 Floater Chromoly Trailing Arms



934 Floater
Trailing Arms

Truck Suspension

Long Travel Kits

KARTEK maintains an inventory that features the latest in long travel kits for full and mid size trucks from Ford, GM, Toyota & Nissan. The kits are from the best in the industry, such as Total Chaos, Camburg, CST, ICON, and Mazzulla. Every kit is tailor made to your application's needs. These kits offer more travel than stock while still utilizing the stock chassis arm mounts.

Depending on the kit, they can include: lower/upper arms, coil-over shocks, brakelines, tie rods, heims, uniballs or bushings, limiting straps, mounts, and hardware.



Upper Control Arms

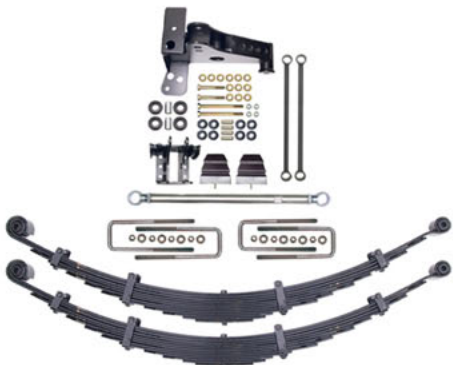
We offer upper control arms which use uniballs or aftermarket ball joints, and heim joints instead of bushings which offer better performance and suspension geometry. They also allow for coil-over shocks for an improved ride, increased performance and adjustability. UCA's are available for most makes of trucks and are designed to allow you to use the latest coil-over shocks.



Lift Kits

Lift Kits from ICON & CST are available for most full size & super duty trucks. These lifts range from 3" leveling kits to 11" lifts. Depending on how you order your kit, they can include drop hangers, u-bolts, shock mounts, stabilizer kit, hardware, leaf springs & shocks, or coil overs.

Lift Kits are ideal if you want the lifted look, or want extra ground clearance with larger tires for your super duty tow/chase truck.



Full Floating Axle Housings

Dirt Tech's housings are constructed from 4130 chromoly, feature a reinforced truss, and an easy fill billet filler. The housings will fit a Ford 9" center section with a 9", 9-1/2", or 10" ring gear. Axle tube lengths are built to customer specifications.



Part Number	Description
KTK-REAREND350	Dirt Tech 3-1/2" Full Floater Axle Housing
KTK-REAREND350WTBM	Dirt Tech 3-1/2" Full Floater Axle Housing w/ 4 Link Mounts
KTK-REAREND400	Dirt Tech 4" Full Floater Axle Housing
KTK-REAREND400WTBM	Dirt Tech 4" Full Floater Axle Housing w/ 4 Link Mounts

Truck Suspension

U-Bolts

KARTEK carry's a wide selection of U-Bolts for most popular trucks and Jeeps. Below is selection of what is available from Deaver, but we also carry U-Bolts for all CST & ICON kits.



Part Number	Description
DVR-C1500UBOLT	Chevy 1500 U-Bolts, Four Pack
DVR-F150UBOLT	Ford F-150 U-Bolts, Four Pack
DVR-RNGUBOLT	Ford Ranger U-Bolts, Four Pack
DVR-RNGUBOLT2	Ford Ranger U-Bolts, 2" Longer Four Pack
DVR-TOYUBOLT	Toyota U-Bolts, Four Pack
DVR-TUNUBOLT	Toyota Tundra & Tacoma U-Bolts, Four Pack
DVR-JS9UBOLT	Jeepspeed 9" Long 3" Housing U-Bolts, Four Pack
DVR-JS9UBOLTCUR	Jeepspeed 9" Long 3-1/4" Housing U-Bolts, Four Pack

Leaf Spring U-Bolt Plates



Weld-On Spring Perch
TAB-AA106A - 3" Axle Tubes, Pair



Spring Upper Plates w/ Shock Mount
PRM-RNG04 - Pair



High Clearance Bottom Plates
TCF-40020 - 2.5" Wide Spring

Leaf Spring Shackles & Hangers



Weld-On 2-1/2" Spring Hanger
TCF-40060 - 96-04 Toyota Tacoma
TCF-40062 - 84-95 Toyota 2wd/4wd



Total Chaos Leveling Shackles - 1/2" to 7/8" Lower Ride
TCF-49702 - 00-06 Tundra
TCF-49504 - 04+ Tundra
TCF-48502 - 04+ F-150



Drop Shackle Mounts & Shackles
PRM-RNGR03 - Ranger Stock Drop, Pair
PRM-RNG02 - Ranger 1.5" Drop, Pair
CAM-120003 - Ranger/Silverado/F-150 1-1/2" Lift Shackles



Total Chaos Chromoly Shackles
TCF-40900 - 9" Shackle
TCF-41200 - 12" Shackle

Four Link Pivot Mounts



Standard Four Link Pivot Mounts
PRM-4LINK300 - 3" Axle Tubes
PRM-4LINK325 - 3-1/4" Axle Tubes



Trophy Truck Four Link Pivot Mounts
KTK-4LINK350TT - 3-1/2" Axle Tubes
KTK-4LINK400TT - 4" Axle Tubes

Rear Axle Shock Mounts

TOTAL CHAOS laser cut lower shock mounts relocate the rear shock mounts on the axle housing. The shock mounts are designed for any 3" outer diameter rear axle housing. They are designed to position and relocate the bottom eyelet of the shock 7" off the back of the housing. Sold in pairs.

Part Number
TCF-40080F
TCF-40080S

Description
Axle Mount for 2.5" & 3.0" Fox Shocks
Axle Mount for Sway-A-Way, King, & 2.0" Fox Shocks



Gussets



Toyota Spindle Gussets
TCF-59698 - 05+ Toyota Tacoma
TCF-59697 - 95-04 Toyota Tacoma

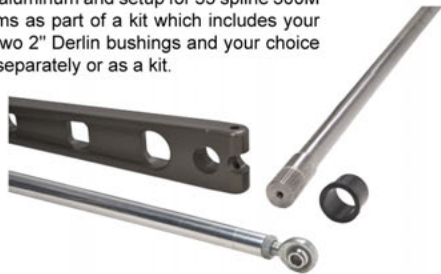


Shackle Pivot Sleeve & Gussets
TCF-41260 - Shackle Pivot Sleeve
TCF-40450 - Shackle Pivot Gussets, 4 Pack

Curt LeDuc Cal Pre-Fun Sway Bars

The Cal Pre-Fun billet arms are CNC machined from 6061-T6 aluminum and setup for 35 spline 300M sway bars. By buying through KARTEK, you can buy the arms as part of a kit which includes your choice of 45", 47-1/2" or 49-1/2" length 300M sway bar with two 2" Derlin bushings and your choice of either steel or aluminum strut ends. You can buy the parts separately or as a kit.

Part Number	Description
SAW-445001250	45" Sway Bar
SAW-447501250	47-1/2" Sway Bar
SAW-449501250	49-1/2" Sway Bar
KTK-SBBUSH	Sway Bar Derlin Bushing, each
KTK-35SSBA	LeDuc 35 Spline Arm Only



Drivetrain Mounts

VW Transaxle Lower Mounts

Part Number	Description
SUS-06109S	Bus Short Bellhousing Mount
SUS-06109T	Bus Tall Bellhousing Mount
PRM-D60043	Type 2 Bellhousing Mount
SUS-06123	Bus Mount, Under Buggy Style
SUS-06124	Bus Mount, Under Baja Bug Style
SUS-06110	Bus Solid Mount w/ Strap, Uses Frame Horns



Drivetrain Mounts

VW Transaxle Over Style Mounts

Part Number	Description
SUS-06122	Bus Mount, Over Buggy Style
SUS-06121	Bus Mount, Over Baja Bug Style, Uses Frame Horns



Bus Over Buggy Style Mount

Mendeola Transaxle Lower Mounts

Part Number	Description
SUS-06147	Mendeola Nose Cone Mount, Mounts in Front
SUS-06149	Mendeola Nose Cone Mount, Mounts Behind
SUS-06146	Mendeola Bellhousing Mount, Mounts in Front
SUS-06148	Mendeola Bellhousing mount, Mounts Behind
SUS-06150	Mendeola S4/S4D Nose Cone Mount
SUS-06152	Mendeola S4/S4D Bellhousing Mount



Mendeola Lower Bellhousing Mount

Transaxle Upper Mounts

Part Number	Description
SUS-06132	Upper Mendeola Bell Housing Mount
SUS-06130	Short/Standard Bus (002/091) Bellhousing Mount
SUS-06130B	Medium Bus (002/091) Bellhousing Mount
SUS-06130C	Tall Bus (002/091) Bellhousing Mount



Mendeola Upper Bellhousing Mount

VW Transaxle 10° Urethane Mounts

These urethane mounts help eliminate some of the noise and vibrations associated with the bus transaxles and tilts the trans 10° to increase ground clearance. This is designed to fit into Baja Bugs and buggies with 002 and 091 Bus transaxles.

Part Number	Description
SUS-06210	10° Bus Transaxle Mount Kit
SUS-06210F	10° Bus Transaxle Nose Cone Mount



VW Transaxle Urethane Upper Mount

Designed to be mounted to the upper bellhousing ears on 71+ Bus transaxles.

Part Number	Description
SUS-06205	Urethane 71+ Bus Upper Bell Housing Mount



VW Urethane Engine Mount

This unique mount is designed to be welded to your rear cage or bumper and bolts to your engine under the oil pump.

Part Number	Description
SUS-06200	Urethane Type 1 Rear Cage Engine Mount



Seat Mounts

Seat Brackets

Seat brackets are available in either a raw or powder coated finish. Seat mounts for Ford's, Chevy's, Jeep's, and Toyota's are available by special order



Adjustable Seat Brackets
PRM-ADJSB - Raw
PRM-ADJSBP - Black



Fixed Seat Brackets
PRM-DDSEATMNTD - Driver Side
PRM-DDSEATMNTP - Passenger Side



Seat Tabs w/ 1/2" Hole
BWS-AA027B - Pair

Seat Slider Pull Knob

These pull knobs are ideal for any customized seat slider as a quick release knob.

Part Number
KTK-SSPK

Description
Seat Slider, Each



Seat Sliders

KARTEK offers several seat sliders and mounts for all of the common suspension seats on the market today.

Part Number
PRM-SS1
PRM-SS2
PRM-SSVW

Description
Universal Slider for Flat Base Seats
Universal Slider for Tab Style Seats
Universal Slider for all Seats with Universal Mounts



SDR UTV Seat Mounts

SDR's seat bases are a direct stock seat base replacement which allow for a sturdier mount for your Rhino or Teryx seats. The mount also lowers the seat 1-1/2" for a lower center of gravity and providing a more comfortable driving position. The design allows for the use of both stock seats and most aftermarket suspension seats that use the stock mounting brackets.

Part Number
SDR-501200
SDR-501030

Description
SDR '04-08 Rhino Seat Base
SDR T-3 Teryx Seat Base



Suspension Seats

Pro Competition

The Pro Competition Seat is 34" tall x 22" wide x 26" deep with a mounting area of 14" wide x 18" front to back. The Pro Comp Series features a twin slotted headrest for a five point harness along with a standard removable seat cushion. A 2" wider version is also available. All seats are available in black and grey. Special orders can order seats in different fabric and color combinations.

Part Number	Description
PRM-CRS	Pro Competition Racing Seat
PRM-CRSEX	2" Wider Pro Comp Seat



Premier High Back & UTV High Back

The Premier High Back Seat is 31" tall x 22" wide x 26" deep with a mounting area of 14" wide x 18" front to back. The high back series features a single slotted headrest for a five point harness.

UTV High Back Seats are also available which are 31" tall x 22" wide x 23" deep. The UTV high backs are available as direct bolt-ins using the stock mounts and tab versions for custom installations. All seats are available in black and grey.

Part Number	Description
PRM-HBS	Premier High Back Seat
PRM-HBSEX	2" Wider High Back Seat
PRM-HBSR	High Back Rhino/Teryx Seat w/ tabs
PRM-HBSRF	High Back Rhino/Teryx Seat w/ Flat Stock mount



Daily Driver & High Back Roadster

The perfect seat for trucks and Jeeps. The Daily Driver is 33" tall and 22" wide, with low sides for easy sliding in and out of. The High Back Roadster version is slightly more narrow at 19".

Part Number	Description
PRM-HBTS	Daily Driver Seat
PRM-HBTSEX	2" Wider Daily Driver Seat
PRM-HBSNW	Roadster High Back Seat



Premier Low Back

The Premier Low Back Seat is 24" tall x 22" wide x 26" deep with a mounting area of 14" wide x 18" front to back. A 2" wider version is also available along with a Roadster version with low sides.. All seats are available in black and grey.

Part Number	Description
PRM-LBS	Premier Low Back Seat
PRM-LBSEX	2" Wider Low Back Seat
PRM-LBSNW	Roadster Low Back Seat



Bench Series

The Bench Series offers several different lengths but the most common bench seats used are the standard 36" wide, 36" wide Rhino and 42" wide Rhino. Bench seats are 24" tall x 26" deep with a mounting area of 18" front to back with the Rhino versions slightly shorter. All seats are available in black and grey.

Part Number	Description
PRM-BENCH	36" Bench Seat
PRM-RHBENCH	36" Rhino Bench Seat, 3" Shorter Base
PRM-RHBENCHEX	42" Rhino Bench Seat, 3" Shorter Base



Child Series

The child series seats allow parents to bring their child along on runs safely in a secure child seat. These seats are available as both tabbed seats and boosters which are available in black and grey. Tabbed seats can be mounted directly to the car like the larger seats, while boosters use an existing larger seat by using the seat belts to secure the booster.

Part Number	Description
PRM-HBSJR	Small Child (1-4 years) Preemy Seat w/ Tabs
PRM-HBSTEN	Pre Teen (5-12 years) Preemy Seat w/ Tabs
PRM-BOOSTER	Preemy Booster Seat, No Tabs
PRM-WINGBOOSTER	Preemy Winged Booster Seat, No Tabs



MasterCraft Seats

3G Series

The 3G combines European styling with MasterCraft's race proven suspension system to increase lateral support. The 3G is also available with a cutout for the R3 neck restraint.

- Deep-sided race seat
- 5-point seatbelt slots
- Removable Euro. style cushion std.
- Size: 36" tall x 22" wide x 28" deep
- Mounting area: 15" front to back x 13-1/2" wide on center
- Sitting level height from floor: 4"
- Weight 22 lbs.
- Available in black or grey

Part Number	Description
MAS-3G	3G Series Seat
MAS-3GNB	3G Series Seat w/ R3 Cutout
MAS-3GEX1	3G Series Seat 1" Extra Wide



ProSeat Series

The ProSeat is the professional racers seat of choice. Developed for extreme off-road conditions, this suspension seat has the right combination of quality and comfort. The ProSeat has 9 inches of hip containment, providing a stable and safe environment for the most hostile of driving conditions.

- Deep-sided race seat
- 5-point seatbelt slots
- Loops to secure belts in place
- Hiback or Loback (with or without headrest)
- Size: Hi - 35" tall x 22" wide x 28" deep
- Mount area: 15" front to back and 13" wide
- Sitting level height from floor: 5"
- Available in black or grey

Part Number	Description
MAS-PROSEAT	ProSeat Series
MAS-PROSEATWC	ProSeat Series w/ Removable Cushion
MAS-PROSEATEX	ProSeat Series Extra Wide
MAS-PROSEATWCX	ProSeat Series Extra Wide w/ Removable Cushion



Suspension Seats

MasterCraft Seats

Pro 4 Series

The "Pro 4" is the ProSeat redesigned with four vertical tabs for mounting which are integrating in the frame. This, combined with MasterCraft's quality and race proven designs, make our Pro 4 the safest and most comfortable four-tab racing seat available.

The Pro 4 will fit any 14"x 18" four-vertical-tab mounting system.

- Deep-sided race seat
- 5-point seatbelt slots
- Loops to secure belts in place
- Size: 35" tall x 22" wide x 28" deep
- Seat base height from floor: 5"
- Available in black or grey



Part Number	Description
MAS-PRO4	Pro 4 Series
MAS-PRO4EX	Pro 4 Series Extra Wide

Safety Restraints

Window Net Mounts

Coleman Spring Window Net Mount Kit

Coleman's window net mount kit is a spring loaded design that enables a driver and co-driver to quickly latch and unlatch the net. The kit is 26-1/2" wide and can use most window nets that feature a loop design such as our thru-rod nets.

Part Number	Description
COL-CM911	26-1/2" Window Net Mount Kit



JAZ Buckle Window Net Mount Kit

The JAZ buckle window net mount kit comes with a buckle latch and a 28" long rod which can be cut to length. The kit and can be used with most nets that feature a loop design such as our thru-rod nets.

Part Number	Description
JAZ-90603	28" Jaz Buckle Window Net Mount Kit



JAZ Rod Latch Window Net Mount Kit

The JAZ latch window net mount kit is comes with a heavy duty latch and a 29" long rod which can be cut to length. The kit and can be used with most nets that feature a loop design such as our thru-rod nets.

Part Number	Description
JAZ-90803	29" Jaz Rod Latch Window Net Mount Kit



Custom Window Nets

Our line of window nets are special order nets built to your specifications. These nets can be ordered as snap-in, thru-rod, and grommet styles. The thru-rod style nets utilize the JAZ and Coleman window net mounts listed here and are race legal in most off-road sanctioned race series.

To order a set, you will need to provide a template which can be done with a cardboard cutout or an existing net.



Seat Belts

KARTEK carries seat belts and hardware from Crow, Mastercraft, and Simpson. Belts are available from 2" to 3" with your choice of either a Y, V, lap belt, four point or five point harness. You can also choose your belts' hardware which can be a bolt-in or snap in design, along with extra accessories like shoulder pads and sternum latches.

Belts are available in black, red, blue, and grey.



Fabrication Tools

Braided Hose & Hardline Tools



37° Flaring Tool
FRA-900500 - For 3/16"-5/8" Tubing



AN Fitting Wrench Set
FRA-900050 - AN -6, -8, -10, -12, -16



Braided Hose Spreader
FRA-900065 - No. 3 & 4 Spreader



Koul Tool Braided Hose Installer Kit
FRA-900510 - AN -4, -6, -8
FRA-900511 - AN -10, -12, -16

Ball Joint Tools

This kit includes a press to remove the stock upper ball joints, and a press to install the new slug adapters supplied with a TOTAL CHAOS suspension kit. These tools are to be used in conjunction with a heavy duty C-Clamp or a ball joint removal press.

Part Number	Description
TCF-96005	Ball Joint Removal & Installation Tool



Fabrication Tools

Dzus Dimple Die

This dimple die is for aluminum body panels that will be mounted on a vehicle with Dzus fasteners. It's designed to be used with wrenches or a ratchet and does not require any special tools besides the tool itself.

Part Number	Description
MSP-MSDT1	Dzus Dimple Die



Dimple Die Sets

Dimpling sheet metal on any race vehicle gives it more strength and removes weight. These dimple dies are made from 4142 heat treated steel so they will not wear out. Sold in sets.

Part Number	Description
KTK-DDSETA	Die Set A: 1/2", 1", 1-1/2", 2"
KTK-DDSETB	Die Set B: 3/8", 3/4", 1-1/4", 1-3/4"



JMR Portable Hydraulic Dimple Kit

JMR's portable hydraulic dimple die set allows you to punch and dimple virtually anywhere, including hard to reach areas on vehicles. The complete kit comes with five punch dies, five dimple dies, a 10 ton hydraulic cylinder with pump, hydraulic hose, and all necessary arbors & adapters. Dies come in 1-1/4", 1-1/2", 1-3/4", 2", 2-1/2" (approximate size AFTER dimpling).

Part Number	Description
JMR-DDH105	JMR Portable Hydraulic Dimple Die Kit



JMR Air Dimple Kit

JMR's air dimple die set is similar to the hydraulic version, but instead utilizes compressed air instead of oil and is foot operated. The complete kit comes with five punch dies, five dimple dies, foot air switch, air hose, and all necessary arbors & adapters. Dies come in 1-1/4", 1-1/2", 1-3/4", 2", 2-1/2" (approximate size AFTER dimpling).

Part Number	Description
JMR-DDAH105	JMR Foot Operated Air Dimple Die Kit



Notes

Policies

REQUIRED ORDERING INFORMATION

In order to process your order, we require the following information:

FULL NAME

BILLING ADDRESS

SHIPPING ADDRESS (IF DIFFERENT)

E-MAIL ADDRESS (IF YOU HAVE ONE)

CONTACT PHONE NUMBERS

CREDIT CARD NUMBERS & INFORMATION

USE OF INFORMATION YOU PROVIDE

The information that we collect is for the sole purpose of processing customer orders, providing customer support, and mailing notices for special offers. The information collected is not given or sold to any other party.

SECURITY OF THE INFORMATION YOU PROVIDE

All information provided by the customer is kept confidential. For all purchases we require direct contact with our customers via walk-in, email, fax, letter and phone.

SPECIAL ORDERS

Items that are not currently in stock require a special order request to be made. If the item is paid in full at the time of purchase, the said item is still subject to any surcharges. It is the customer's responsibility to pay the difference in the cost caused by a surcharge. If the difference is not paid, the customer may be subject to a 15% handling fee and the remainder of the original balance will be refunded. Estimated delivery time of any special orders are only an estimate.

ITEM AVAILABILITY

This catalog serves as a limited listing of the products offered by Kartek Off-Road. This catalog does not list all available product lines of Kartek Off-Road, but instead serves as a general guide of what Kartek Off-Road carries. Direct contact with a staff member of Kartek Off-Road serves as the only way to find the current availability of any product.

SHIPPING POLICY

We ship all domestic orders via UPS only; International orders may vary on carriers. Shipping on all orders is to be pre-paid, and we do not accept C.O.D. (Cash On Delivery) orders. All orders must be received by 3:00pm PST (Pacific Standard Time) to be shipped the same business day. All other orders after 3:00pm will be shipped out the following business day.

RETURN POLICY

All returned parts are subject to a 15% handling fee. Any unused merchandise in the original packaging may be returned within 14 days of the original purchase date. There are no returns on any and all electrical items, coil springs, special orders, discounted items, or limited offer items. No returns will be accepted on damaged or used items.

DISCLAIMER

All products sold by Kartek Off-Road are for "Off Highway Use Only" and are not legal for street use in the state of California.

Products manufactured or sold by Kartek Off-Road are guaranteed to be non-defective before installation. It is Kartek's assumption that the purchaser understands how to use and install the product they are purchasing.

Due to a variety of factors including but not limited to: driving habits, driver experience, vehicle condition, terrain conditions and quality of installation, Kartek cannot be held responsible or liable for any product failure after it has been installed.

Other manufacturer's products that are resold by Kartek may carry a manufacturer's warranty and carry no Kartek warranty whatsoever. You may request pre-sale notification of warranty terms which may apply to the products you are interested in purchasing by calling our store at (951) 737-7223 Mon.-Fri. 9AM-6PM PST.

Order by Phone
951-737-7223
951-737-2999

Order by Email
offroad@kartek.com

Order by Fax
951-737-1877

Kartek Off-Road
2871 Ragle Way
Corona, CA. 92879-1877

Store Hours PST
MON-FRI: 9am-6pm
SAT: 9am-3pm
SUN: CLOSED

www.kartek.com





www.Kartek.com

2871 Ragle Way - Corona, CA 92879

Call to Order

951-737-7223

951-737-2999

Sales & Information

offroad@kartek.com

